



RTA Railway Tie Association



2020-2021 Membership Directory
Survive and Thrive



The Railway Tie Association 2020-2021 Membership Directory

Table of Contents

<u>Index</u>	<u>Page</u>
North America Producer Member Map	4
Key Listing of Producer Companies	5
Producer Member Plants by Preservative Systems	7
Alphabetical Listing by Section:	
Direct Producers	9
Suppliers (Preservative)	27
Suppliers (Non-Preservative)	33
Contractor/Consultants	41
Waste Management/Recycling	51
Associate Members	57
Global Members	60
Honorary Members	63
Index of Members	67

For more information about membership contact:

The Railway Tie Association

115 Commerce Drive, Suite C

Fayetteville, GA 30214

TEL: (770) 460-5553

FAX: (770) 460-5573

EMAIL: ties@rta.org

WEBSITE: www.rta.org

DISCLAIMER:

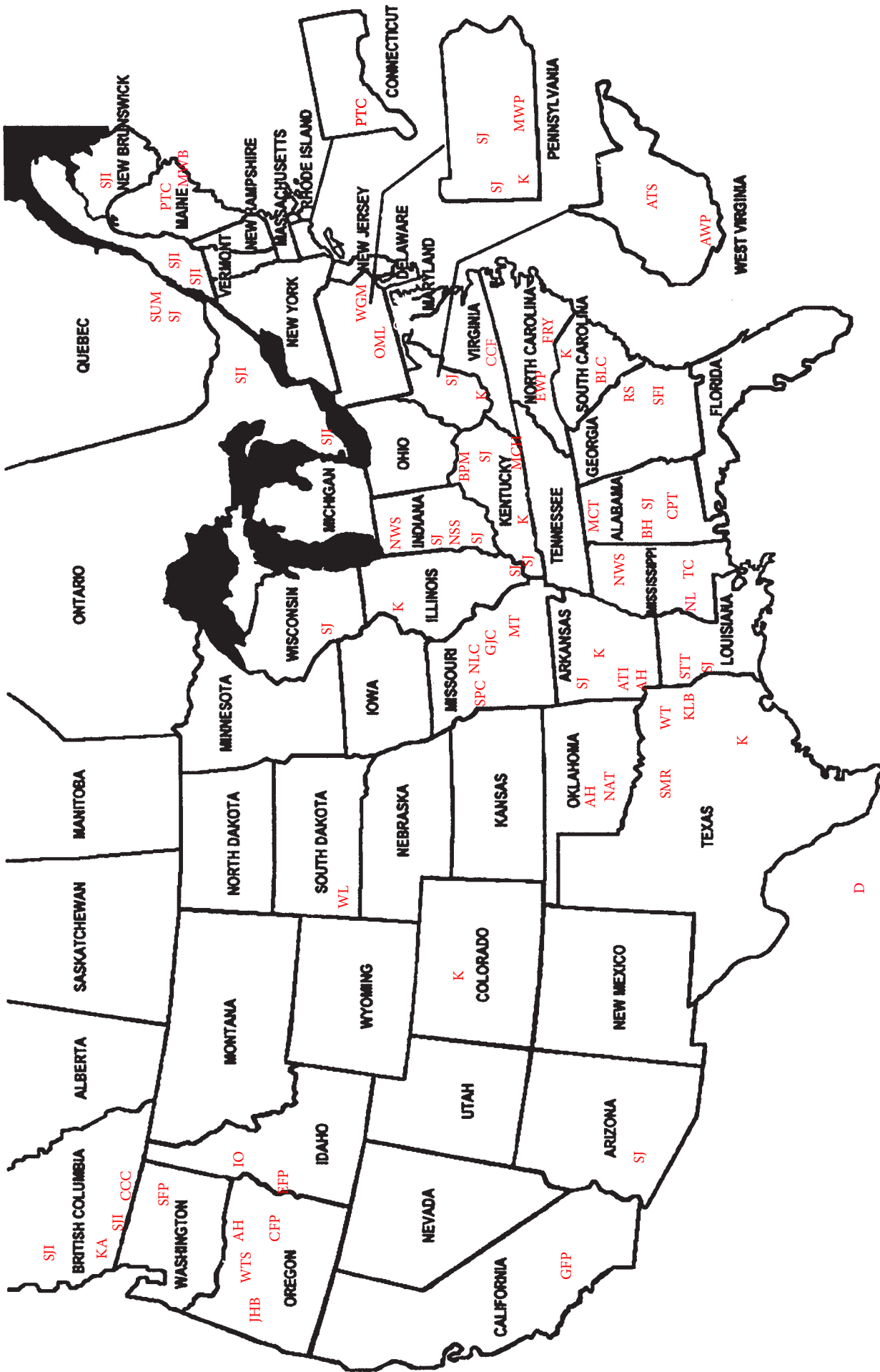
The Railway Tie Association proudly promotes the products and services of the wood tie industry in general. In so doing, it does not endorse, warrant or guarantee the products and services of any individual Association member versus another, nor does it warrant or guarantee the goods and services of specific members. Any such warranties or guarantees express or implied, are disclaimed. The information in this directory has been provided by the Association members themselves and is reproduced here for the convenience of the members and their customers.

We would like to gratefully acknowledge the companies that support the RTA by advertising on the tabs throughout this directory. Without their support, we would not have been able to publish and distribute this year's membership directory.

The Railway Tie Association was organized in 1919 as The National Association of Railroad Tie Producers, which grew out of predecessor groups dating back to the late 1800's. The name changed to The Railway Tie Association in 1932.

The purpose of the Association is to promote the economical and environmentally sound use of wood crossties. The Association is involved in research into crosstie design, and ongoing activities dealing with sound forest management, conservation of timber resources, timber processing, wood preservation and safety of industry workers.

The objectives of the Association include the research and development of crosstie design, manufacture and use; collecting and providing industry statistics; developing and publishing specifications; promoting and maintaining high standards of quality for crossties; governmental affairs; cooperate closely with related organizations; conduct annual meetings; support seminars and other educational functions; and the printing of various publications.



North America Direct Producer Member Key

<u>Key</u>	<u>Company Name</u>	<u>Key</u>	<u>Company Name</u>
AWP	Acme Wood Preserving, Inc.	NL	Netterville Lumber Company
AH	AmeriTies Holdings LLC	NLC	Norman Lumber Co.
ATI	Anthony Timberlands, Inc.	NAT	North American Tie & Timber Co
ATS	Appalachian Timber Services, Inc.	OML	P. T. O'Malley Lumber Company, Inc.
BLC	Beal Lumber Company	PTC	Perma Treat Corporation
BPM	BPM Lumber, LLC	SPC	Scott Post Co
BH	Buchanan Hardwoods	SFP	Spokane Forest Products
CPT	Cahaba Pressure Treated Products	SMR	The Somerville Companies, Inc.
CCF	Charles City Forest Products	SFI	Southern Forest Industries, Inc.
D	DECCO	SJ	Stella-Jones Corp. (US)
EFP	Eagle Forest Products	SJI	Stella-Jones Inc.(Canada)
EWP	Edwards Wood Products	SUM	Sumitomo Canada Limited
GFP	Gemini Forest Products	STT	Superior Tie & Timber
GJC	Gross & Janes Company	TTT	Tie & Timber Technologies
IO	Intermountain Orient	WT	Ward Timber, Ltd.
JHB	JH Baxter & Company	WTS	Westlake Timber Supply
FRY	John L. Frye Co.	WL	Wheeler Lumber, LLC
KLK	K. L. Barton & Sons Tie Company	WGM	William G. Moore & Son, Inc. of Delaware
KA	Koppers Ashcroft Inc.		
K	Koppers Inc.		
MCT	McCord Tie and Timber		
MCH	McCreary County Hardwoods, Inc.		
MWP	Mellott Wood Preserving, Inc.		
MT	Missouri Tie, Inc.		
NWS	Natural Wood Solutions		

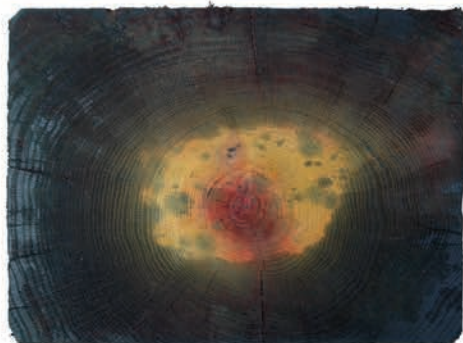
This Page Intentionally Left Blank

CROSSTIES TO YOUR SPECIFICATIONS

WE DELIVER THE QUALITY YOU EXPECT... **EVERY TIME**

Accurate, Measurable and Repeatable Preservative Retention Levels

Our patented Tru-Core® dual pressure treatment process ensures that the retention levels of Borate and Creosote Petroleum Solution that you specify for your crossties, are achieved and verifiable. Koppers delivers quality you can rely on for every decay zone.



Crosstie Lifecycle Management

Dispose of scrap crossties cost-effectively with environmentally responsible recycling from Koppers.

Koppers Benefits

- Eight strategically located treatment facilities in North America
- Creosote Petroleum Solution (CPS) pressure treated ties or patented Tru-Core®¹ dual treated Borate and CPS ties for extended life in the harshest decay zones
- U.S. Treatment plants are AAR M-1003, ISO 14001 and RC14001 certified

BUILDING GREAT LINES FROM THE GROUND UP.™



www.koppers.com
1-888-567-8437

¹ Tru-Core® is manufactured under license from Kop-Coat Inc.





FROM LOGS TO TIES: TRUSTED BY RAILROADS AND MILLS FOR 100 YEARS

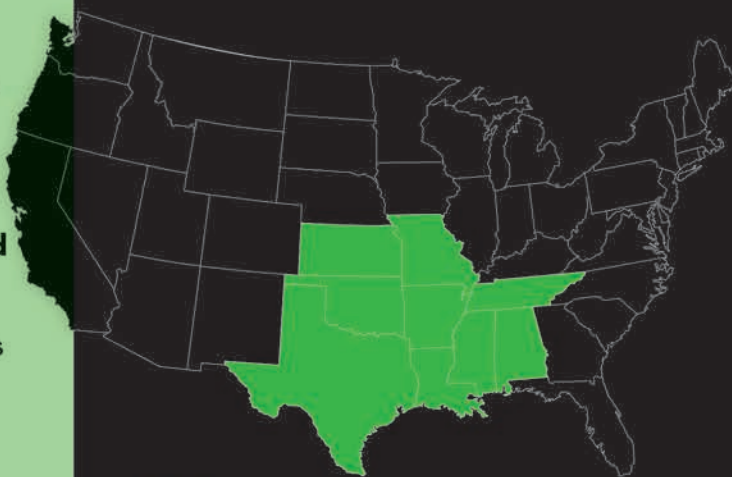


Trust and strength have run deep in our roots for 100 years. From multi-generational relationships with our sawmill partners to today's Tuff-Tie™ Dual Step Borate Treatment, Class 1 and Short Line customers depend on Gross & Janes' performance. Along the way, we have expanded our procurement footprint into nine states, nurtured our sawmills and increased efficiencies through state-of-the-art processing plants. It all comes together as we consistently meet today's marketplace demands with the high-quality railroad ties our customers need and the excellent, trusted service they deserve.

Tuff-Tie™

The Tuff-Tie™ Dual Step Borate Treatment Method

ensures repeatable and measurable production results that meet wood science objectives. Class 1 and Short Line railroads know the advantages of our proper dual step Borate diffusion method to meet economic and safety objectives.



Trusted by railroads and mills for 100 years!

**Tell us what we
can do for you.**

102 North Clay Avenue
Kirkwood, MO 63122
Office: (636) 343-8484
www.grossjanes.com

Producer Members

Railway Tie Association Membership Directory 2020-2021

Acme Wood Preserving, Inc.

914 So. Wickham Ave.
Princeton, West Virginia 24740
TEL: (304) 425-8769
FAX: (304) 425-1496
EMAIL: bnh.acmewood@frontiernet.net

Physical Location: Same as Mailing

Contact: Bruce Hobbs, President
C. Dave Thompson, Sales Representative (CCA Preserv)

Geographical Area Served: Worldwide

Products Produced or Sold: All railroad products; creosote and CCA pressure treated wood products; crossties; switch ties; bridge timbers; crossing timbers; posts; poles; pilings

Treatment Processes Used: Creosote: Boulton drying full cell/empty cell lowry process; ruping process

Website: www.acmewoodpreserving.com

Production Transportation Modes Available: Rail; Truck

Special Equipment or Manufacturing Services Offered: Incising; end plating; adzing; dowelling; fabrication; TSO; etc.

AmeriTies Holdings LLC

3865 Wolverine Street NE, Suite #13-E
Salem, Oregon 97305
TEL: (971) 374-1991
EMAIL: jthompson@amerities.com

Physical Location: Same as mailing

Contact: Jeff Thompson, President

Geographical Area Served: Western United States, South and Midwestern States

Products Produced or Sold: Treated Bridge Timbers, Crossties, Switch ties, Poles

Treatment Processes Used: Creosote; Borate Treatment

Production Transportation Modes Available: Union Pacific Railroad; Highway

Special Equipment or Manufacturing Services Offered: Framing & Incising Equipment for Bridge Timbers & other Products

Plant or Other Locations:

AmeriTies West LLC – The Dalles, Oregon

Contact: Lance Bliss, Plant Manager

TEL: (541) 296-1808

EMAIL: lbliss@amerities.com

Geographical Area Served: Western United States

Products Produced or Sold: Treated Bridge Timbers, Crossties, Switch ties, Poles

Treatment Processes Used: Creosote, Copper Naphthenate

Production Transportation Modes Available: Union Pacific Railroad; Highway

Special Equipment or Manufacturing Services Offered: Framing & Incising Equipment for Bridge Timbers & other Products

AmeriTies South LLC – Hope, Arkansas

Contact: Mark Diles, Plant Manager

TEL: (870) 722-6222

EMAIL: mdiles@amerities.com

Geographical Area Served: South and Midwestern States

Products Produced or Sold: Crossties and Switch ties

Treatment Processes Used: Creosote; Borate Treatment

Production Transportation Modes Available: Union Pacific Railroad; Highway

Anthony Timberlands, Inc.

P. O. Box 128
Beirne, Arkansas 71721
TEL: (870) 353-2517
FAX: (870) 353-4139
Website: www.anthonytimberlands.com

Physical Location: 16243 Highway 51 South, Gurdon, AR 71743

Contact: Mike McQueen, Vice President atioak@gmail.com
Yolanda Calley, Sales Mngr. atihardwoodsales@gmail.com
Ronnie Fowler, Sales rfowler@anthonytimberlands.com

Anthony Timberlands, Inc. (cont.)

Geographical Area Served: United States, Canada and Mexico. Export Available

Products Produced or Sold: Hardwood lumber, crossties, switch ties, timbers

Species: Primarily Red and White Oak - Mixed Hardwood

Production Transportation Modes Available: UP Rail; Truck

Plant or Other Locations:

Mount Holly, AR:

170 Mill Road

Mount Holly, Arkansas 71758

Telephone: 870-554-2466

Fax: 870-554-2476

Contact: Chris McQueen, Manager chrismcqueen@gmail.com

Geographical Area Served: United States, Canada, and Mexico. Export Available

Products Produced or Sold: Hardwood lumber, crossties, switch ties, timbers

Species: Primarily Red and White Oak - Mixed Hardwood

Production Transportation Modes: Truck

Magnolia, AR

520 West Garland

Magnolia, Arkansas 71753

Phone: 870-234-2310

Contact: Chris McQueen, Manager chrismcqueen@gmail.com

Geographical Area Served: United States, Canada, and Mexico. Export Available

Products Produced or Sold: Hardwood lumber, crossties, switch ties, timbers

Species: Primarily Red and White Oak - Mixed Hardwood

Production Transportation Modes: PTM Rail, Truck

Anthony Hardwood Composites

PO Box 490

Sheridan, Arkansas 72150

Phone: 870-942-4000

Fax: 870-942-4040

Email: info@anthonycomposites.com

Website: www.anthonytimberlands.com

Products: Engineered Mats

Anthony Wood Treating

300 Gunter Street

Hope, Arkansas 71801

Phone: 870-777-8871

Fax: 870-777-8987

Treatment Processes Used: MCQ pressure treated for southern pine

Production Transportation Modes: UP Rail, Truck

Appalachian Timber Services, LLC

393 Edgar Given Parkway

Sutton, West Virginia 26601

TEL: (304) 765-7393

FAX: (304) 765-3788

Geographical Area Served: South & East

Products Produced or Sold: Railroad crossties; switch ties; bridge timbers; crossing timbers

Treatment Processes Used: Creosote

Physical Location: Same as mailing address

Contact: Richard Gibson, Vice President Sales

Producer Members

Railway Tie Association Membership Directory 2020-2021

Appalachian Timber Services, LLC (cont.)

Production Transportation Modes Available: Truck; Rail

Special Equipment or Manufacturing Services Offered: Adz, Prebore, Dap, Size

Plant or Other Locations:

Terry Samples, Plant Manager; Tel: (304) 765-7393; Fax: (304) 765-3788

Beal Lumber Co., Inc.

P.O. Box 409

Little Mountain, South Carolina 29075 (Sales Location)

TEL: (803) 932-2100

FAX: (803) 945-2100

EMAIL: fsbeal@beallumber.com

Geographical Area Served: Southeast United States

Products Produced or Sold: Lumber, Hardwood Timbers, Switch Ties and Crossties

Production Transportation Modes Available: Truck, NS and CSX Rail

Special Equipment or Manufacturing Services Offered: Bandmill; Resaw; D.E.T.

Plant or Other Locations: Mill Location: 1370 Spartanburg Highway, Jonesville, SC 29353

Physical Location: 1041 Berley-Boland Rd., Prosperity, SC 29127

Contact: Frank S. Beal, Jr., President

BPM Lumber, LLC

1256 Manchester Street

Lexington, Kentucky 40504

TEL: (859) 859-685-1120

FAX: (859) 252-6964

EMAIL: jfoley@bpmlumber.com

Geographical Area Served: United States Canada

Products Produced or Sold: Green ties

Website: www.bpmlumber.com

Product Transportation Modes Available: CSX and NS rail siding; Truck

and inspection of railroad and industrial specialty wood products, such as blocks, wedges, wheel clocks and bridge material.

Physical Location: Same as mailing address

Contact: John E. Foley, President

Buchanan Hardwoods

P.O. Box 424

Aliceville, Alabama 35442

TEL: (205) 373-8710

FAX: (205) 373-6982

EMAIL: sales@buchananhardwoods.com

Geographical Area Served: Worldwide

Products Produced or Sold: Switch Ties, Hardwood Lumber, and Hardwood Flooring

Special Equipment or Manufacturing Services Offered: Hardwood Sawmill and Flooring Plant

Physical Location: 6600 Baptist Line Rd., Aliceville, AL 35442

Contact: Butch Ousley, Sales Manager

Jim Bailey, Sales

Cahaba Pressure Treated Forest Products

P. O. Box 160

Brierfield, Alabama 35035-0160

TEL: (205) 926-9888

FAX: (205) 926-7625

EMAIL: brandon@nwpoles.com; greg@nwpoles.com

Geographical Area Served: Eastern and Midwest U.S. Export Markets

Products Produced or Sold: Ties, timbers, posts, poles and piling; biomass products

Treatment Processes Used: Creosote, Borates, Copper Naphthenate, Penta, CCA-ET

Rail Loading Points: Wilton, AL and Calera, AL

Physical Location: 12755 Montevallo Rd., Brierfield, AL 35035

Contact: Brandon Stephens, Sales (Cell) 205-928-0283

Greg Suttle, Inside Sales (Cell) 205-361-7434

Producer Members

Railway Tie Association Membership Directory 2020-2021

Cahaba Pressure Treated Forest Products (cont.)

Production Transportation Modes Available: Truck, rail, barge, container

Special Equipment or Manufacturing Services Offered: Custom Treating (TSO) Kiln drying available

Charles City Forest Products

P.O. Box 398

Providence Forge, Virginia 23140

TEL: (804) 966-2336

FAX: (804) 966-5938

EMAIL: eanne84@aol.com

Geographical Area Served: The Carolinas, Virginia, Maryland, Pennsylvania, and West Virginia

Products Produced or Sold: Crossties, timbers, crane mats, 2 and 3 ply laminated mats, pine timbers (member SPIB)

Treatment Processes Used: N/A

Production Transportation Modes Available: 5 miles off the interstate; CSX rail on site; 1 hour from port of Norfolk.

Rail Loading Points: Nance, VA

Other Locations: Enfield, NC

Physical Location: 2200 Barnetts Rd., Providence Forge, VA 23140

Contact: Tom Evelyn, President

DECCO

Av. Insurgentes No. 682-703B

Col. Del Valle

Ciudad de Mexico 03103

TEL: 011-5255-5681-0040

FAX: 011-5255-5668-7395

EMAIL: jaime.escobar@comdecco.com; joseluis.avila@comdecco.com; alejandro.autrique@comdecco.com

Geographical Area Served: North and South America

Products Produced or Sold: Crossties & Switch Ties, Bridge Timbers, Crossing Timbers - Hardwood and Softwood; Utility and Telephone Poles

Treatment Processes Used: Creosote, Penta, CCA, Borate, Waterborne

Website: www.comdecco.com

Production Transportation Modes Available: Rail; Truck

Special Equipment or Manufacturing Services Offered: Difficult or unusual sizes

Physical Location: Same as mailing address

Contact: Alejandro Autrique, President

Javier Ochoa, Plant Manager

José Luis Avila, Sales Manager

Jaime Escobar, International Sales

Eagle Forest Products

P.O. Box 2119

Eagle, Idaho 83616

TEL: (800) 309-18451

EMAIL: wpiatt@eaglefp.com

Geographical Area Served: USA

Products Produced or Sold: We offer Doug-fir, SYP, Mixed Hardwood Bridge Timbers, MHW Crossing and Crane Mats

Production Transportation Modes Available: We ship on trucks or rail, depending on volume & customer needs.

Treatment Processes Used: Creosote and QNAP Preservatives

Physical Location: 222 State Street, Eagle, ID 83616

Contact: Wes Piatt, Sales

Edwards Wood Products, Inc.

PO Box 219

Marshville, North Carolina 28103

TEL: (704) 624-5098

FAX: (704) 624-6812

EMAIL: jeffedwards@ewpi.com

Geographical Area Served: North America and International Markets

Products Produced or Sold: Wooden pallets, cut stock, grade lumber, crane mats, bridge mats, crossties, switch ties, flooring, lumber, cants, chips, bark and dust

Treatment Processes Used: Pallet heat treatment, dry kilns & dipping

Physical Location: 2215 Old Lawyers Rd., Marshville, NC 28103

Contact: Jeff Edwards, President

Edwards Wood Products, Inc. (cont.)

Production Transportation Modes Available: In-house truck fleet

Special Equipment or Manufacturing Services Offered: Hardwood sawmill, Pine sawmill, Pallet manufacturing, Chip mill, crane mats and bridge mats

Plant or Other Locations: Peachland, Laurinburg and Liberty, NC, and Manning, SC

Rail Loading Points: Peachland & Laurinburg, NC

Gemini Forest Products

Physical Location: 10608 Los Alamitos Blvd., Los Alamitos, CA 90720

P. O. Box 105

Contact: Ted Pollard

Los Alamitos, California 90720

TEL: (562) 594-8948

FAX: (562) 430-6763

EMAIL: ted@geminiforest.com

Geographical Area Served: United States; Canada and all export

Products Produced or Sold: Crossties; switch ties; bridge timbers; poles; piling; railroad car decking and blocking (oak; MHW; SYP; douglas fir; mix western species)

Treatment Processes Used: Creosote; Penta; ACZA; ACQ

Production Transportation Modes Available: Truck; Rail; Container

Special Equipment or Manufacturing Services Offered: Boring; planing; tongue and groove; ship lap; specialty resaw & reman

Gross & Janes Co.

Physical Location: Same as mailing address

Headquarters

Contact: Bill Behan, President

102 N. Clay Avenue

Kirkwood, Missouri 63122

TEL: (636) 343-8484

FAX: (636) 343-9793

EMAIL: billbehan@grossjanes.com

Geographical Area Served: North America

Products Produced or Sold: Oak, Mixed Hardwood, Southern Yellow Pine and Western softwood species crossties; switch ties

Treatment Processes Used: Borate treatment available at Camden, AR plant

Production Transportation Modes Available: Rail; truck; container,

Special Equipment or Manufacturing Services Offered: Crosstie and switch tie inspection, trimming, incising, endplating, air stacking and packaging services at Camden, AR; Crosstie and switch tie rail loading in Carthage, TX; Crosstie inspection, trimming, incising, branding, endplating, air stacking and packaging services at Williamsville, MO; loading of any type rail car at most locations for shipment to any point in North America.

Plant Location: Williamsville, MO; Camden, AR; Carthage, TX

Intermountain-Orient, Inc.

Physical Location: 1447 Tyrell Lane, Boise, ID 83706

P.O. Box 8288

Contact: Mike Clements, President

Boise, Idaho 83707

Ken Hessing, Sales

TEL: (208) 384-5600

FAX: (208) 384-5858

EMAIL: jmc@intermountain-orient.com; ken@intermountain-orient.com

Geographical Area Served: 50 States

Products Produced or Sold: Crossties, Switch Ties, Bridge Timbers, Wood Pilings, Utility Poles

Treatment Processes Used: Creosote, ACQ, ACZA, Copper Naphthenate, Pentachlorophenol

Website: www.Intermountain-Orient.com

Production Transportation Modes Available: Railcars, Truckload

Producer Members

Railway Tie Association Membership Directory 2020-2021

J.H. Baxter & Co.

P.O. Box 23138
Eugene, Oregon 97402
TEL: (866) 960-9703 or (503) 689-3801
FAX: (541) 689-8303
EMAIL: jfarley@jhbaxter.com

Physical Location: 3494 Roosevelt Blvd., Eugene, OR 97402

Contact: Dick Keeley, General Manager
Jeanne Olson, Plant Manager

Geographical Area Served: Western US, Western Canada, Alaska, Hawaii and North America

Products Produced or Sold: Pressure treatment of ties, piling, poles, posts, glulams, lumber timbers, crossarms, kiln drying, heat treatment (certified WCLIB); DuroSleeve Wood Protection System

Treatment Processes Used: Full length pressure treatment: ACQ, ACZA, Clean Creosote, Creosote-Petroleum solution, Pentachlorophenol; BMPs per WWPI

Contracting or Consulting Services Offered: Consulting for treatment recommendations

Website: www.jhbaxter.com

Production Transportation Modes Available: Truck and rail access on-site

Special Equipment or Manufacturing Services Offered: Custom treating, end-plating, s-irons, wrapping, poly coatings, can incise up to 24"x24", DuroSleeve installation services

Plant or Other Locations: Corporate office: PO Box 5902, San Mateo, CA 94402. TEL: (650) 349-0201

Rail Loading Points: UP and BNSF

John L. Frye Company

P. O. Box 1202
Elon, North Carolina 27244
TEL: (336) 214-9185; (336) 816-7606
FAX: (336) 538-1738
EMAIL: fryetie@gmail.com; merwin@triad.rr.com and jerwin@triad.rr.com

Physical Location: 134 N. Asheboro St, Liberty, NC 27298

Contact: John Erwin, Manager
Mary Erwin, Admin Asst.

Geographical Area Served: Carolinas, Virginia, Southeast

Products Produced or Sold: Railroad crossties; pallet lumber

Production Transportation Modes Available: Liberty location - Rail and truck; Robbins location - Truck

Plant or Other Locations: Robbins, NC

Rail Loading Points: Liberty, NC

K. L. Barton & Sons Tie Company

P. O. Box 540
Garrison, Texas 75946
TEL: (936) 347-2744
FAX: (936) 347-5162

Physical Location: U.S. Hwy. 59, South 710, Garrison, TX 75946

Contact: Bob J. Barton, President

EMAIL: klbarton@windstream.net

Geographical Area Served: East Texas; Western Louisiana; ship to anywhere by UP or BNSF or truck

Products Produced or Sold: Crossties

Production Transportation Modes Available: Truck; Rail - Union Pacific - BNSF

Contracting or Consulting Services Offered: Crossties

Special Equipment or Manufacturing Services Offered: Loading of any type of railcar

Koppers Inc.

436 Seventh Avenue
Pittsburgh, Pennsylvania 15219
TEL: (888) 567-8437

Physical Location: Same as mailing address

Contact: **Commercial Railroad Products & Services**
Ben Leidy, Manager - Commercial Sales
TEL: (412) 227-2367; EMAIL: LeidyBJ@koppers.com
Class 1 Railroads
John Giallonardo, VP Sales & Marketing - UP
TEL: (412) 227-2400; EMAIL: GiallonardoJR@koppers.com

Producer Members

Railway Tie Association Membership Directory 2020-2021

Koppers Inc. (cont.)

Bryan Stout, Class I Sales Mngr. NS, BNSF, CSX, KCS
TEL: (412) 227-2408; EMAIL: StoutBC@koppers.com
Jason Hosko, Class 1 Sales Manager-CN, CP
TEL: (412) 227-2269; EMail: HoskoJT@koppers.com

Koppers Inc. - Ashcroft, British Columbia

Patrick Sullivan, Plant Manager

Products Produced or Sold: Grade crossties; industrial ties; switch ties; bridge timbers/lumber

Treatment Processes Used: 50/50, P-1

Product Transportation Modes Available: Truck; Rail – CP and CN

Koppers Inc. - Denver, Colorado

Mike McHugh, Plant Manager

Products Produced or Sold: Grade crossties; industrial ties; switch ties; pre-plated ties

Treatment Processes Used: CPS

Product Transportation Modes Available: Truck; Rail - Union Pacific and BNSF

Koppers Inc. - Florence, South Carolina

Ted Owens, Plant Manager

Products Produced or Sold: Grade crossties; industrial ties; switch ties; bridge timbers/lumber; pre-plated ties

Treatment Processes Used: CPS, Borate

Product Transportation Modes Available: Truck; Rail - CSX

Koppers Inc. - Galesburg, Illinois

James Evans, Plant Manager

Products Produced or Sold: Grade crossties; industrial ties; switch ties; pre-plated ties

Treatment Processes Used: CPS, Borate

Product Transportation Modes Available: Truck; Rail - BNSF

Koppers Inc. - Guthrie, Kentucky

Ryan Headlee, Plant Manager

Products Produced or Sold: Grade crossties; industrial ties; switch ties; track panels; pre-plated ties

Treatment Processes Used: CPS, Borate

Product Transportation Modes Available: Truck; Rail - CSXT

Koppes Inc. - Montgomery, Pennsylvania

Al Rutz, Plant Manager

Geographical Area Served: Northeast

Products Produced or Sold: Grade crossties; industrial ties; switch ties; bridge timbers/lumber; pre-plated ties

Treatment Processes Used: P-2, CPS, Borate

Product Transportation Modes Available: Truck; Rail - NS/CPR

Koppers Inc. - North Little Rock, Arkansas

Chris Martin, Plant Manager

Products Produced or Sold: Grade crossties; industrial ties; grade crossing panels; bridge timbers/lumber; pre-plated ties

Treatment Processes Used: CPS

Product Transportation Modes Available: Truck; Rail - Union Pacific and BNSF

Koppers Inc. - Roanoke, Virginia

Travis Yeoman, Plant Manager

Products Produced or Sold: Grade crossties; industrial ties; switch ties; bridge timbers/lumber/flangeway type crossing

Treatment Processes Used: CPS, Borate

Product Transportation Modes Available: Truck; Rail - NS

Koppers Inc. - Somerville, Texas

Billy Newton, Plant Manager

Products Produced or Sold: Grade crossties; industrial ties; switch ties; pre-plated ties

Treatment Processes Used: CPS; Borate

Product Transportation Modes Available: Truck; Rail – BNSF

Producer Members

Railway Tie Association Membership Directory 2020-2021

McCord Tie and Timber, Inc.

P.O. Box 677
Falkville, Alabama 35622
TEL: (888) 784-6284
FAX: (256) 784-6287
EMAIL: Mitchell@mccordtieandtimber.com; Jay@mccordtieandtimber.com

Physical Location: 4384 Highway 31 SW, Falkville, AL 35622

Contact: Mitchell McCord, President & Sales
Jay McCord, Procurement

Geographical Area Served: Truck delivery throughout the southeast, including: Alabama, Georgia, Florida, Mississippi, Louisiana, Texas, Arkansas, Tennessee, Kentucky, North and South Carolina. Rail delivery via centerbeam railers or gondolas is also available nationwide

Products Produced or Sold: Creosote treated wood products, including crossties, switch ties, tie plugs, bridge timbers, and grade railroad crossings.

Treatment Processes Used: Treatment of air-seasoned material and boultonized material via empty cell process

Product Transportation Modes Available: Delivery available by truck or railcar (centerbeam or gondola)

Special Equipment or Manufacturing Services Offered: Ability to mechanically insert s-irons and apply end-plates; operations of timber-sizes for railroad crossings and ability to incise all material for treatment

McCreary County Hardwoods, Inc.

P. O. Box 487
Pine Knot, Kentucky 42635
TEL: (606) 354-2311
FAX: (606) 354-9001

Physical Location: 741 Southern Hwy., Pine Knot, KY 42635

Contact: David Hatfield, Vice President

Geographical Area Served: Southeastern U.S.

Products Produced or Sold: Green crossties

Product Transportation Modes Available: Rail; Truck

Mellott Wood Preserving, Inc.

P. O. Box 209
Needmore, Pennsylvania 17238
TEL: (717) 573-2519
FAX: (717) 573-4534
EMAIL: dougmellott@mellottwood.com & howardtomlinson@mellottwood.com

Physical Location: 1398 Sawmill Road, Needmore, PA 17238

Contact: Douglas D. Mellott, Vice President
Howard A. Tomlinson, VP Manufact. & Sales

Geographical Area Served: Northeast; Canada

Products Produced or Sold: Crossties; switch ties; bridge ties

Treatment Processes Used: Copper Naphthenate, Borate

Production Transportation Modes Available: Rail; Truck

Special Equipment or Manufacturing Services Offered: Self-unloading trucks

Missouri Tie, LLC

8324 Hwy. 72
Bunker, Missouri 63629
TEL: (573) 689-2040
FAX: (573) 689-2120
EMAIL: mike@missourit.ie.com; matt@missourit.ie.com

Physical Location: Same as mailing address

Contact: Mike McNail, Vice-President
Matt Seal, General Manager

Geographical Area Served: United States and Canada

Products Produced or Sold: 6x8 and 7x9 Crossties; 7x9 Switch Ties; Bridge Ties; Full Depth Crossing Timbers

Treatment Processes Used: Creosote, Borate

Production Transportation Modes Available: Trucks to anywhere in the U.S. or Canada. Rail shipments originating on Union Pacific BNSF or CN.

Natural Wood Solutions, LLC

P.O. Box 130 (Corporate Address)
Mooreville, Mississippi 38857
TEL: (317) 859-8725
FAX: (317) 859-8726

Sales Office: 8720 Ridge Hill Dr., Indianapolis, IN 46217

Contact: Jeffrey C. Broadfoot, Sales & Marketing
Shane Kitchens, Technical & New Business Develop.
Brian Lindsey, Operations

Producer Members

Railway Tie Association Membership Directory 2020-2021

Natural Wood Solutions, LLC (cont.)

EMAIL: jbbroadfoot@naturalwoodsolutions.com; skitchens@naturalwoodsolutions.com; blindsey@naturalwoodsolutions.com

Geographical Area Served: United States, Canada, Mexico

Products Produced or Sold: Crossties, Switch Ties, Full Depth Timber Road Crossing Panels, Bridge Ties and Timbers

Treatment Processes Used: Creosote, Copper Naphthenate, Borate Pre Treatment & Borate Dual Treatment

Contracting or Consulting Services Offered: Quality Control and Inventory Management Systems

Website: www.naturalwoodsolutions.com

Rail Loading Points: Falkville, AL (CSX); Hope, AR (UP); Eagle Pass, TX (UP & BNSF); Houston, TX (PTRA)

Production Transportation Modes Available: Trucks to anywhere in the U.S. & Canada. Rail shipments originating on CSX, UP, BNSF, & PTR

Netterville Lumber Company

P. O. Box 857

Woodville, Mississippi 39669

TEL: (601) 888-4343

FAX: (601) 888-6469

EMAIL: matthew@nettervillelumber.com

Website: www.nettervillelumber.com

Geographical Area Served: Global

Special Equipment or Manufacturing Services Offered: Able to cut up to 30' long cross ties, able to cut specialized timber sizes

Products Produced or Sold: Lumber, crossties, molding, laminate mats, crane mats

Product Transportation Modes Available At This Site: Truck Container

Physical Location: 3975 Buffalo Rd., Woodville, MS, 39669

Contact: Matthew Netterville, Operations Manager

Norman Lumber Company

a.k.a. Arneson Timber Company

9651 Clayton Road

St. Louis, Missouri 63124

TEL: (314) 692-9999

FAX: (314) 692-2499

EMAIL: info@normanlumber.com

Geographical Area Served: United States, Canada and Mexico

Products Produced or Sold: Blocks and Wedges, Crossties, Bridge Ties and Timbers, Tie Plugs, Switch Ties, Car Decking, Utility Poles, Plywood, Sign Posts, Custom Projects.

Treatment Processes Used: Creosote; Penta; CCA; ACQ; CA; Borate-Flame Retardant; MCA

Production Transportation Modes Available: Truck, Rail, Ship Containers

Physical Location: Same as mailing address

Contact: N. Arne Arneson, Chairman

Peder Arneson, President

North American Tie & Timber LLC

6 NE 63rd St., Suite 350

Oklahoma City, Oklahoma 73105

TEL: (405) 463-6700

FAX: (866) 710-9223

EMAIL: gdodson@tieandtimber.com; thehms@tieandtimber.com

Geographical Area Served: United States, Canada, and Mexico

Products Produced or Sold: Crossties, Switch Ties, Timbers, Bridge Timbers, Crossings, Timber Framing Services (Species: Oak, Mixed Hardwoods, Western Softwoods, Southern Yellow Pine)

Production Transportation Modes Available: Truck or Rail (loading points on Union Pacific, Canadian Pacific, Kansas City Southern, Norfolk Southern, BNSF, Paducah & Louisville, Canadian National)

Rail Loading Points: Hope, AR; The Dalles, OR

Physical Location: Same as mailing address

Contact: Gene Dodson, Manager

(931) 723-2062 or Cell (405) 620-2688

Will Cumberland, Procurement Manager

Cell (662) 574-9286

Tony Helms, Sales Manager

Cell (479) 970-2875

Producer Members

Railway Tie Association Membership Directory 2020-2021

P.T. O'Malley Lumber Co., Inc.

1030 Batavia Farm Rd.
Baltimore, Maryland 21237
TEL: (410) 477-0500
FAX: (410) 477-2439

Physical Location: Same as mailing address

Contact: William Crowther, Plant Manager

Geographical Area Served: United States

Products Produced or Sold: Blocks; wedges; car flooring; plywood; switch ties; tie plugs; tapered plugs; pallets

Treatment Processes Used: Creosote; Penta; CCA, ACQ

Production Transportation Modes Available: Truck

Special Equipment or Manufacturing Services: Cut to size; fabrication; lamination

Perma Treat Corporation

Perma Treat Corporation
74 Air Line Drive
Durham, Connecticut 06422
TEL: (860) 349-1133
FAX: (860) 349-1365

Physical Location: Same as mailing address

Contact: David A. Fink, President
Donald G. Ponko, General Manager

Geographical Area Served: New England and points south and west

Products Produced or Sold: Crossties; switch ties; bridge timbers; crossing packages; hardwood grade & construction lumber; landscape products; custom treating service

Treatment Processes Used: Air dry/Boulton dry; creosote pressure treating

Contracting or Consulting Services Offered: Tie disposal; wood waste disposal

Product Transportation Modes Available: Rail siding – PAR system; tractor trailer

Special Equipment or Manufacturing Services: Environmentally safe tie disposal is available

Plant or Other Locations:

Perma Treat Maine 26 Green St., Mattawamkeag, ME 04459, TEL: (207) 736-3011 FAX: (207) 736-3329

Specializing in environmentally safe tie disposal. Full kiln capacity

Scott Post & Tie Company, Inc.

11060 Hwy 60 West
Poplar Bluff, Missouri 63901
TEL: (573) 714-1115
FAX: (573) 778-9588
EMAIL: shaundahite@hotmail.com

Physical Location: Same as mailing

Contact: Shaunda Scott Hite, President/Owner

Geographical Area Served: Mid America - North America

Products Produced or Sold: Ties, Timber, Post, southern yellow pine, oak, mixed hardwoods

Treatment Processes Used: Creosote - Treatment of air dried material

Special Equipment or Manufacturing Services Offered: Kiln Dry - S4S - Incising for bridge timbers, end plating, custom treating

Product Transportation Modes Available: Trucks to anywhere in the United States

The Somerville Companies, Inc.

8115 Preston Road, #690
Dallas, Texas 75225
TEL: (214) 369-7576
FAX: (214) 369-7579

Physical Location: Same as mailing address

Contact: Bill Somerville, President
Tom Somerville, Vice President

Geographical Area Served: Texas; Louisiana; Arkansas; Mississippi; Missouri; Tennessee and Alabama

Products Produced or Sold: Crossties; switch ties; panel ties; cants; hardwood lumber; pine lumber

Contracting or Consulting Services Offered: Operates as a green cross ties contractor for the railroads investing and servicing sawmill operations primarily for the procurement of railroad crossties

Producer Members

Railway Tie Association Membership Directory 2020-2021

Southern Forest Industries, Inc.

P. O. Box 373

Smarr, Georgia 31086

TEL: (478) 994-0000

FAX: (478) 994-0004

EMAIL: mstickland@southernforest.us

Geographical Area Served: Eastern United States

Products Produced or Sold: Green crossties; timbers, lumber, chips

Product Transportation Modes Available: NS railway; Truck

Physical Location: 3794 Old Macon Rd., Forsyth, GA 31029

Contact: Matt Stickland, President

Spokane Forest Products

P. O. Box 9489

Spokane, Washington 99205

TEL: (509) 777-1107

EMAIL: trace@spokaneforest.com

Physical Location:

Contact: Trace Sutter

Stella-Jones Corp.

U.S. Headquarters

Park West One, Suite 500

1000 Cliff Mine Road

Pittsburgh, PA 15275

TEL: (800) 272-8437

FAX: (412) 774-1689

Geographical Area Served: North America and Export

Website: www.stella-jones.com

Physical Location: Same as mailing address

Contact: Mike Sylvester, Senior VP, Operations

George Caric, Vice President, Marketing

Jim Raines, Vice President, Sales

(304) 532-3932

David Whitted, Vice President, Sales Operations

Patrick Kirkham, Vice President, Operations

Plant or Other Locations - U.S.

Alexandria, LA

3600 Koppers Street

Alexandria, LA 71302

TEL: (318) 442-5733

FAX: (888) 959-3131

Geographical Area Served: North America and Export

Products Produced or Sold: Crossties, Switch ties

Treatment Processes Used: Creosote, 2-Step Borate

Production Transportation Modes Available: Rail - Union Pacific, Kansas City Southern; Truck

Special Services Offered: Pre-Plating

Contact: Steve Bryant, Plant Manager

Justin Runyon, Sales Manager (520) 631-4283

Bangor, WI

W 1038 County Road U

Bangor, WI 54614

TEL: (608) 486-2700

FAX: (608) 486-4538

Geographical Area Served: North America and Export

Products Produced or Sold: Crossties, Switch ties, Crossing timbers

Treatment Processes Used: Creosote

Product Transportation Modes Available: Rail – Canadian Pacific; Canadian National; BNSF; Truck

Special Services Offered: Pre-Plating

Contact: Elizabeth Russell, Plant Manager

Craig Cook, Sales Manager (218) 282-3002

Producer Members

Railway Tie Association Membership Directory 2020-2021

Stella-Jones Corp. (cont.)

Clanton, AL

100 McKinney Drive
Clanton, AL 35045
TEL: (205) 280-3950

Geographical Area Served: North America and Export

Products Produced or Sold: Crossties, Switch ties

Treatment Processes Used: Creosote, Borate

Product Transportation Modes Available: Rail – CSX; Truck

Contact: Jeff Jordan, Plant Manager
Eddie Horton, Sales Manager (304) 488-9936

DuBois, PA

392 Larkeytown Road
DuBois, PA 15801
TEL: (814) 371-7331
FAX: (814) 375-0946

Geographical Area Served: North America and Export

Products Produced or Sold: Crossties, Switch ties, Bridge timbers, Highway Crossing timbers

Treatment Processes Used: Creosote

Product Transportation Modes Available: Buffalo & Pittsburgh; Truck

Special Services Offered: Panel Bridges, Prefabricated Crossings, Pre-Plating

Contact: Mike Rosiek, Plant Manager
Gary Young, Sales Manager (724) 480-8438
Micky Liguras, Sales Manager (330) 479-9710

Eloy, AZ

P.O. Box 968
Eloy, AZ 85231
TEL: (520) 466-7801
FAX: (520) 466-3607

Geographical Area Served: North America and Export

Products Produced or Sold: Crossties, Switch ties, Crossing timbers, Bridge timbers

Treatment Processes Used: Creosote, Borate

Product Transportation Modes Available: Rail-UP; Truck

Contact: Bob Schuh, Sales Manager (520) 466-7801

Fulton, KY

3855 US Highway 51 S.
Fulton, KY 42041
TEL: (270) 472-5557
FAX: (270) 472-5559

Geographical Area Served: United States; Canada; Mexico and South America

Products Produced or Sold: Crossties, Switch ties

Treatment Processes Used: Creosote, 2-step Borate

Product Transportation Modes Available: Rail - Canadian National, Truck

Special Services Offered: Pre-Plating

Contact: Andy Pane, Plant Manager
Micky Liguras, Sales Manager (330) 479-9710

Goshen, VA

9223 Maury River Road
Goshen, VA 24439
TEL: (540) 997-9251
FAX: (540) 997-0047

Geographical Area Served: North America and Export

Products Produced or Sold: Crossties, Switch ties, Bridge timbers, Crossing timbers

Treatment Processes Used: Creosote, 2-step Borate, Copper Naphthenate

Product Transportation Modes Available: Rail - Buckingham Branch; CSX, NS, Truck

Special Services Offered: Panel bridges, Prefabricated Crossings, Pre-Plating

Contact: Tim Reed, Plant Manager
Eddie Horton, Sales Manager (304) 488-9936

Producer Members

Railway Tie Association Membership Directory 2020-2021

Stella-Jones Corp. (cont.)

McAlisterville, PA

5865 State Route 235
McAlisterville, PA 17049
TEL: (717) 463-2131
FAX: (717) 463-3998

Contact: Doug Ryan, Plant Manager
Gary Young, Sales Manager (724) 480-8438

Geographical Area Served: North America and Export
Products Produced or Sold: Crossties, Switch ties, Tie plugs
Treatment Processes Used: Creosote, Borate
Product Transportation Modes Available: Truck
Special Services Offered: Pre-Plating

Montevallo, AL

1051 Highway 25 South
Brierfield, AL 35035
TEL: (205) 665-2536
FAX: (205) 665-2545

Contact: Brian Ingersoll, Plant Manager
Eddie Horton, Sales Manager (304) 488-9936

Geographical Area Served: North America and Export
Products Produced or Sold: Crossties, Switch ties, Bridge timbers, Crossing Timbers
Treatment Processes Used: Creosote, Borate, Copper Naphthenate
Product Transportation Modes Available: Rail – NS; Truck

Russellville, AR

4260 South Arkansas Avenue
Russellville, AR 72802
TEL: (479) 968-5085
FAX: (479) 968-4636

Contact: Bryan Frazee, Plant Manager
Justin Runyon, Sales Manager (520) 631-4283

Geographical Area Served: North America & Export
Products Produced or Sold: Crossties, Switch ties, Bridge timbers, Crossing timbers
Treatment Processes Used: Creosote, 2-Step Borate
Special Services Offered: Panel Bridges, Prefabricated Crossings, Pre-Plating

Winslow, IN

3818 S. County Road 50 E
Winslow, IN 47598
TEL: (812) 789-5331
FAX: (812) 789-5335

Contact: Steve Basham, Plant Manager
Micky Liguras, Sales Manager (330) 479-9710
Craig Cook, Sales Manager (218) 282-3002

Geographical Area Served: North America and Export
Products Produced or Sold: Crossties, Switch ties, Tie plugs
Treatment Processes Used: Creosote, 2-step Borate
Production Transportation Modes Available: Truck; Rail - Norfolk Southern, CN
Special Services Offered: Pre-Plating

Corporate Headquarters In Canada

3100 de la Côte-Vertu Boulevard, Suite 300
Saint-Laurent, Québec, Canada H4R 2J8
TEL: (514) 934-8666
FAX: (514) 934-5327
EMAIL: glabelle@stella-jones.com

Contact: Eric Vachon, President

Plants or Other Locations - Canada

Carseland, AB

P.O. Box 99
Carseland, AB Canada T0J 0M0
TEL: (403) 934-4600

Contact: Ian Jones, Senior Vice-President
Robert Stewart, Director of Sales, Western Region

Stella-Jones Inc. (cont.)

Geographical Area Served: North America

Products Produced or Sold: Grade Crossties, Industrial ties, Switch ties, Poles & Piling

Treatment Processes Used: Creosote, Penta, ACQ, CCA

Product Transportation Modes Available: Truck, Rail – Canadian National, Canadian Pacific

Delson, QC

41 Rodier Street

Delson, QC Canada J5B 2H8

TEL: (450) 632-2011

Geographical Area Served: North America

Products Produced or Sold: Grade Crossties, Industrial ties, Switch ties, Poles & Piling

Treatment Processes Used: Creosote, ACQ, CCA

Product Transportation Modes Available: Truck, Rail – Canadian National, Canadian Pacific

Contact: André Daigle, General Manager, Central Region
Muriel Cronier, Sales Manager/International
(800) 387-5027 x 1152

Gatineau, QC

426, chemin de Montreal Est

Gatineau, QC Canada J8M 1V6

TEL: (819) 986-8998

Geographical Area Served: North America

Products Produced or Sold: Poles & Piling

Treatment Processes Used: CCA, CCA-PEG, CCA-PA

Product Transportation Modes Available: Truck

Contact: André Daigle, General Manager, Central Region
Marc Lauzon, Regional Manager

Guelph Utility Pole Co. Ltd.

7818 Wellington Road 22

P.O. Box 154 RR #5

Guelph, ON Canada N1H 6J2

TEL: (519) 822-3901

Geographical Area Served: North America

Products Produced or Sold: Poles & Piling

Treatment Processes Used: Penta, ACQ

Product Transportation Modes Available: Truck, Rail

Contact: Craig Frohlich, Plant Manager
Kyle Conley, Sales Manager

New Westminster, BC

25 Braid Street

New Westminster, BC Canada V3L 3P2

TEL: (604) 521-4385

Geographical Area Served: North America

Products Produced or Sold: Grade Crossties, Industrial ties, Switch ties, Piling and Industrial Poles

Treatment Processes Used: Creosote, Penta, CCA

Product Transportation Modes Available: Rail – BNSF, Canadian National, Canadian Pacific; Truck

Contact: Ian Jones, Senior Vice-President
Desmond Fitzgerald, Export Marketing Manager
Alan Miller, Sales Manager

Prince George, BC

7177 Pacific Street

Prince George, BC Canada V2N 5S4

TEL: (250) 561-1161

Geographical Area Served: North America

Products Produced or Sold: Grade Crossties, Industrial ties, Switch ties, Poles & Piling

Treatment Processes Used: Creosote, Penta, CCA-ET, CCA

Product Transportation Modes Available: Truck, Rail – Canadian National

Contact: Ian Jones, Senior Vice-President
Robert Stewart, Director of Sales, Western Region

Selkirk Forest Products Company

7400 Galloway Mill Rd.

Galloway, BC Canada V0B 1T2

Tel: (250) 429-3493; FAX: (250) 429-3931

Geographical Area Served: North America

Products Produced or Sold: Poles

Contact: Ian Jones, Senior Vice-President
Robert Stewart, Director of Sales, Western Region

Producer Members

Railway Tie Association Membership Directory 2020-2021

Stella-Jones Inc. (cont.)

Treatment Processes Used: Penta

Product Transportation Modes Available: Truck, Rail (CPR)

Sorel – Tracy, QC

2210, chemin St-Roch

Sorel-Tracy, QC Canada J3R 3L2

TEL: (450) 742-5977

Geographical Area Served: North America

Products Produced or Sold: Poles & Piling

Treatment Processes Used: Borate, ACQ

Product Transportation Modes Available: Truck

Contact: André Daigle, General Manager, Central Region
Muriel Cronier, Sales Manager/International

Truro, NS

278 Park Street

Truro, NS Canada B2N 5C1

TEL: (902) 893-9456

Geographical Area Served: North America

Products Produced or Sold: Grade Crossties, Industrial ties, Switch ties, Poles & Piling

Treatment Processes Used: Creosote, Penta, ACQ, CCA

Product Transportation Modes Available: Truck, Rail - Canadian National

Contact: Gordon Murray, Vice President-Envro, Tech & GM
Stephen Cook, Sales Manager/Atlantic

Sumitomo Canada Limited

380 St. Antoine Street West, Suite 3131

Montreal, QC Canada H2Y 3X7

TEL: (514) 878-0104

FAX: (514) 871-0224

EMAIL: denis.schaeffer@sumitomocorp.com

Physical Location: Same as mailing address

Contact: Denis Schaeffer, Vice President & General Mngr.

Superior Tie & Timber

P. O. Box 847

Vivian, Louisiana 71082

TEL: (318) 375-4956

FAX: (318) 375-5473

Geographical Area Served: South

Products Produced or Sold: Crossties; switch ties; bridge timbers

Treatment Processes Used: Lowery; Rueping

Product Transportation Modes Available: Rail; Truck; Barge

Physical Location: 14800 Highway 1, Vivian, LA 71082

Contact: Scoot Sowell, Plant Manager

Tie & Timber Technologies LLC

361 Cooper River Drive

Mount Pleasant, South Carolina 29464

TEL: (404) 966-0454 (Gene Martini)

TEL: (843) 990-8119 (Jim Pagel)

EMAIL: gmartini45@gmail.com; jcpagel@gmail.com

Geographical Area Served: South Carolina and adjacent states

Products Produced or Sold: Railway Ties / Pallet cants

Special Equipment or Manufacturing Services Offered: Carriage Mill for producing bridge ties, switch ties, construction mats

Product Transportation Modes Available: Truck/Rail

Rail Loading Points: CSX and RJ Corman rail spurs adjacent to plant site

Physical Location: Same as mailing

Contact: Eugene N. Martini, Managing Member
James C. Pagel, Vice President, Finance

Ward Timber, Ltd.

P.O. Box 360

Linden, Texas 75563

TEL: (903) 756-7700

FAX: (903) 756-8313

EMAIL: jerry.hendrix@wardtimber.com

Physical Location: 1101 US 59, Linden, TX 75563

Contact: Jerry Hendrix, Mill Manager

Producer Members

Railway Tie Association Membership Directory 2020-2021

Ward Timber, Ltd. cont.)

Website: www.wardtimber.com

Geographical Area Served: Northeast Texas; Western Louisiana; Southern Arkansas; Southeast Missouri

Products Produced or Sold: Crossties; switch ties, cants, hardwood

Treatment Processes Used: Copper Naphthenate

Product Transportation Modes Available: Truck

Westlake Timber Supply, LLC

5 CenterPoint Drive, Suite 400

Lake Oswego, Oregon 97035

TEL: (205) 725-3725

EMAIL: Alan@westlaketimbersupply.com

Geographical Area Served: United States

Website: www.westlaketimbersupply.com

Physical Location: Same as mailing

Contact: Alan Cox, President

William G. Moore & Son, Inc. Of Delaware

P. O. Box 6309

Freehold, New Jersey 07728

TEL: (732) 303-6049

FAX: (732) 303-6075

EMAIL: sales@moorethanwood.com

Geographical Area Served: United States & International

Products Produced or Sold: Oak; Southern Pine; Douglas Fir; EKKI/Azobe; Mora; Angelim Pedra & Vermelho and Greenheart. All domestic species and all tropical hardwoods; Crossties & Switch Ties; Bridge timbers; Pre-fabricated bridge sections; Car decking & blocking; Turnouts; Crossovers; Panelized track sections; Frogs; Special work sections; Crane mats; Cribbing; Poles & Piling; Rail & OTM; Tie plates & hardware; Composite ties

Treatment Processes Used: All treatments available

Contracting or Consulting Services Offered: Millwork; Tapering; Dapping; Pre-plating, etc.

Website: www.moorethanwood.com

Production Transportation Modes Available: Rail, Ocean, Truck

Special Equipment or Manufacturing Services Offered: Unique fabrication of specialty including daps, dowels, etc., WBE/DBE certified

Physical Location: 218 Schanck Rd., Freehold, NJ 07728

Contact: Audrey Troise, President

Shelly Zisko, Vice President

Julie Mosher, Vice President-Sales

We are **Stronger** *together.*

Stella-Jones unique advantage for customers is the breadth of products and services that we provide.



Crossties & Switch Ties



Bridge Timbers & Panelized Decks



Highway Grade Crossings



Borate Pre-Treatment



QNAP Bridge Timbers



We're ready to work with you today;
across North America and in
your backyard.

Visit www.Stella-Jones.com or call
1.800.272.8437

You Make 'em, We Stack 'em

MADE IN USA

Brewco DP-5000 Stacker

PATENTED

Call Mike
To Order
Yours Today



270.754.5847



SCAN FOR
STACKER VIDEO



270.754.5847

www.brewcoinc.com



Suppliers (Preservative)

Railway Tie Association Membership Directory 2020-2021

Coopers Creek Chemical Corp.

884 River Road
West Conshohocken, Pennsylvania 19428
TEL: (610) 828-0375
FAX: (610) 828-9720
EMAIL: amorris@cooperscreekchemical.com
mmorris@cooperscreekchemical.com
smorris@cooperscreekchemical.com

Physical Location: Same as mailing address

Contact: Mark Morris, - ext. 125
Scott Morris, - ext. 117

Geographical Area Served: Domestic & International

Products Produced or Sold: Creosote various grades

Website: www.cooperscreekchemical.com

Product Transportation Modes Available: Rail; Drum; Bulk Tanker

Etimine USA, Inc.

411 Hackensack Avenue, Suite 902
Hackensack, New Jersey 07601
TEL: (201) 462-1200 (New Jersey Office)
CELL: (973) 652-5139 (DM Schake); (203) 428-1673 (H Gani)
EMAIL: dschake@etimineusa.com; hgani@etimineusa.com

Physical Location: Same as mailing address

Contact: Donna Schake, Sales & Marketing Manager
Haluk Gani, President & CEO

Geographical Area Served: North, Central and South America. Globally through parent company Eti Maden, Turkey and sales offices throughout Europe, Asia, Africa and Australia/New Zealand.

Products Produced or Sold: : Eti Maden is the world leader in boron minerals and refined borates. Etimine USA offers borate preservatives used in treating wood and composites. Our EPA MG registered products include: Boric Acid, Etidot 67 (DOT) disodium octaborate tetrahydrate, Etibor 48 (borax pentahydrate, 5 mol) and borax decahydrate. Additional products include zinc borate, boron oxide, anhydrous borax, ulexite and colemanite mineral ores. We also hold PMRA registrations in Canada.

Website: www.etimineusa.com

Plant or Other Locations: Etimine USA borates are available in warehouses across the US, Wilmington DE, Savannah GA and Pasadena TX, by truck and rail. Please contact Donna Schake for more information.

Koppers Inc.

436 Seventh Avenue
Pittsburgh, Pennsylvania 15219-1800
TEL: (412) 227-2435
FAX: (412) 227-2262
EMAIL: kraynik@koppers.com

Physical Location: Same as mailing address

Contact: Chuck Kraynik, Mngr. Marketing & Sales-Distillates
Carbon Materials & Chemicals

Geographical Area Served: North America; Worldwide

Products Produced or Sold: Coal Tar Creosote (AWPA P1/P13); & Creosote solution (AWPA P2) for pressure applications; Coal Tar Creosote (AWPA P1/P13) for general applications; Creosote Petroleum Solution

Product Transportation Modes Available: Truck; Rail; Barge

Plant or Other Locations: (Inside U.S.) Chicago, IL; Clairton, PA; Follansbee, WV; (Outside U.S.) Newcastle, Australia; Uithoorn, Netherlands; Nyborg, Denmark; Scunthorpe, England; Pt. Clarence, England; Tangshan & Jiangsu, China

Lone Star Specialty Products, LLC

Corporate Headquarters
4200 East Skelly Drive, Suite 600, Tulsa, OK 74135
TEL: (918) 488-1339:
Pittsburgh, PA Office
Contact: Jennie Rahimzadeh (724) 996-2597

Physical Location: 6412 U.S. Highway 259, Lone Star, TX 75668

Contact: Michael Mancione, CEO (724) 630-1689
Luke Galan, Manager of Sales & Marketing (918) 346-0535

Suppliers (Preservative)

Railway Tie Association Membership Directory 2020-2021

Lone Star Specialty Products, LLC (cont.)

EMAIL: mmancione@lonestarspecialties.net;

luke@asphalt-fuelsupply.com ; jrahimzadeh@lonestarspecialties.net

Geographical Area Served: North American, Central America, South America

Products Produced or Sold: AWWA Creosote P1, P2, P3, CPS, Petroleum oils

Product Transportation Modes Available: Rail; Truck, Packaged, totes, ISO containers

Website: www.lonestarspecialties.net

Lonza Wood Protection

Physical Location: Same as mailing address

1200 Bluegrass Lakes Parkway

Contact: Grady Brafford, VP Industrial Sales

Alpharetta, Georgia 30004

TEL: (678) 627-2000

FAX: (678) 627-2083

EMAIL: grady.brafford@lonza.com

Website: www.chemonite.com

Geographical Area Served: North America

Products Produced or Sold: Wood treating chemicals, including Chemonite® ACZA and DOT

Product Transportation Modes Available: Truck, Rail

Special Equipment or Manufacturing Services Offered: Engineering and Environmental Services

Nisus Corporation

Physical Location: Same as mailing address

100 Nisus Drive

Contact: Kevin Kirkland, President/CEO

Rockford, Tennessee 37853

Ken Laughlin, Divisional VP of Wood Preservation

TEL: (865) 577-6119

Dr. Jeff Lloyd, Vice President of R&D

FAX: (865) 577-5825

Dr. Mark Manning, Business Development Mngr.

Canon McDonald, Eastern Regional Sales Mngr.

EMAIL: kevink@nisuscorp.com; Kenl@nisuscorp.com; jeffl@nisuscorp.com; canonm@nisuscorp.com; markm@nisuscorp.com

Geographical Area Served: USA and Global

Products Produced or Sold: QNAP Copper Naphthenate; Cellutreat DOT Liquid Borate; Cellutreat Powder DOT Borate and BTX Bridge Tie Extender System (allows for borate treatment of unseasoned bridge ties)

Product Transportation Modes Available: Rail, Tanker, Truck, LTL

Rain Carbon Canada Inc.

Physical Location: Same as mailing address

725 Strathearn Ave., North

Contact: Gord Gilmet, Technical Manager

Hamilton, Ontario, Canada L8H 5L3

TEL: (905) 548-5532

FAX: (905) 544-4942

EMAIL: gord.gilmet@raincarbon.com

Geographical Area Served: North America

Products Produced or Sold: Various types of creosote for use as a wood preservative

Product Transportation Modes Available: Railcar, tanker truck, marine vessel

Rail Loading Points: Hamilton, Ontario

Website: www.raincarbon.com

Rio Tinto Minerals (U.S. Borax)

Physical Location: Same as mailing address

200 E. Randolph, Suite 7100

Contact: Frank Wawrzos

Chicago, Illinois 60601

TEL: (773) 270-6549

EMAIL: Frank.Wawrzos@riotinto.com

Rio Tinto Minerals (U.S. Borax), cont.

Geographical Area Served: Global distribution of Borate wood preservatives

Products Produced or Sold: Tim-bor Industrial - a Borate wood preservative with EPA registration suitable for use as a preservative in the dual treatment of wooden crossties

Website: www.borax.com

Wood Care Systems

P.O. Box 2160

Kirkland, Washington 98083

TEL: (425) 827-6000

FAX: (425) 822-5800

EMAIL: jim@ewoodcare.com; tonybchambers@gmail.com

Geographical Area Served: North America

Products Produced or Sold: Boron rods for remedial treatment of bridge timbers, crossing timbers, switch ties, and crossties. Excellent for the Boron source prior to preservative pressure treatment for dual treatments. Established 3rd party research proven effective.

Contracting or Consulting Services: Treatment plant design and implementation

Website: www.Ewoodcare.com

Physical Location: 719 Kirkland Ave., Kirkland, WA 98033

Contact: Jim Renfroe, President (cell) 425-681-3031

Tony Chambers (cell) 304-531-9254

This Page Intentionally Left Blank



NATIONAL
INDUSTRY
LEADER FOR
ON-TRACK
SERVICES.



NATIONAL

RAIL

CHANGE OUTS
TRACK REMOVAL

TIES

DISTRIBUTION
REMOVAL & RECYCLING

Serving the worlds largest
transportation companies
for over 40 years.

National takes pride in
distinguishing ourselves by
the environmentally
responsible way we safely
remove, recover, and
restore these materials.

Contact Nick Mood
today at
800-795-3722
ext:225
Nick.Mood@nssccorp.com



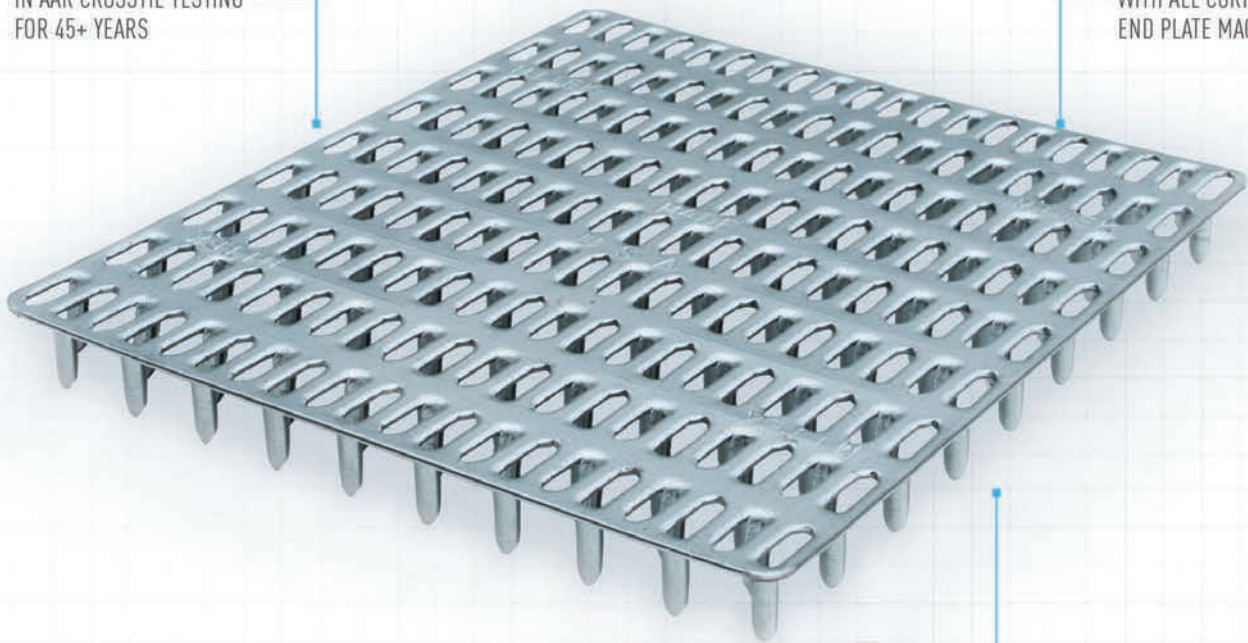
NSSCCORP.COM

CHOOSE A TRACK RECORD THOUSANDS OF MILES LONG

MITEK® ANTI-SPLIT PLATES

INCLUDED
IN AAR CROSSTIE TESTING
FOR 45+ YEARS

WORKS
WITH ALL CURRENT
END PLATE MACHINES



MEETS OR EXCEEDS
RAILROAD SPECIFICATIONS

TRUST THE ONLY ANTI-SPLIT PLATES PROVEN TO PERFORM SINCE 1970.

MiTek's Anti-Split Plates are specifically designed for end grain applications, with patent features that ensure penetration at the end of the tie for maximum holding power. Extend the Life of Your Crossties.

Contact Vuk Milicevic: vmilicevic@mii.com / 773-573-5117

MiTek®

1-800-328-5934
MiTek-US.com

COPYRIGHT © 2019 MITEK INDUSTRIES, INC. ALL RIGHTS RESERVED

Suppliers (Non-Preservative) *Railway Tie Association Membership Directory 2020-2021*

A&K Railroad Materials, Inc

P.O. Box 30076
Salt Lake City, Utah 84130
TEL: (801) 974-5484
FAX: (800) 367-4246
EMAIL: sales@akrailroad.com
Website: www.akrailroad.com

Physical Location: 1505 S. Redwood Rd., Salt Lake City, UT 84104

Contact: Kellen Desmond, President

Geographical Area Served: North and South America

Products Produced or Sold: New and relay rail, tie plates, ties: packaged, preplated and panelized turnouts; bonded insulated joints, fasteners, continuous welded rail (CWR)

Production Transportation Modes Available: Truck, railcar and barge

Contracting or Consulting Services Offered: Change out and abandonment Rail/OTM recovery, CWR rail trains

Plant or Other Locations: Dolomite, AL; Mira Loma, CA; Stockton, CA; Hamden, CT; Granite City, IL; Gary, IN; Hobart, IN; Kansas City, KS; Toledo, OH; McMurray, PA; Eagle Lake TX; Spring, TX (International Office); Salt Lake City, UT; Tacoma, WA

American Wood Technology

2133 Lawrenceville - Suwanee Road , Suite 12-339
Suwanee, Georgia 30024
TEL: (877) 785-0274 or (404) 520-0239
EMAIL: claus@staalner.com

Physical Location: Same as mailing address

Contact: Claus Staalner, President

Geographical Area Served: North and Central America

Special Equipment or Manufacturing Services Offered: We offer complete Turn-Key treating plants for Creosote plants for Ties and Poles as well as oil based chemicals. We offer complete plant PLC/NC controls together with our complete plants, but can also supply custom built control systems with or without motor control cabinets as a stand-alone item for existing plants. We have Hydro-Thermo treatment plants available, as well as Vacuum drying process equipment. We offer custom built hydraulic doors and rail bridges for certain rail bridges. In addition we are also offering a complete line of Dip tanks from very small and manually operated to completely automatic dip system for borate and other chemical treatments. We offer a complete line of automation and handling equipment like transfer bridges, roller conveyors chains, feeders and all handling needed for a treating plant of any kind

Arkansas Steel Associates

2803 Van Dyke Road
Newport, Arkansas 72112
TEL: (870) 523-3693
FAX: (870) 523-4619
EMAIL: jacot@arkansassteel.com

Physical Location: Same as mailing address

Contact: Shota Kajikawa, President & CEO
Richard Anderson, Vice President Sales & Purchasing
Jeff Jacot, Sales Manager

Asphalt and Fuel Supply, LLC

4200 East Skelly Drive, Suite 600
Tulsa, Oklahoma 74135-3210
TEL: (918) 488-1339
FAX: (918) 523-7089

Physical Location: Same as mailing address

Contact: John Reaves, Managing Member
Luke Galan, Manager of Sales & Marketing
Matt Roberts, Vice President

EMAIL: john@asphalt-fuelsupply.com; matt@asphalt-fuelsupply.com; Cell: (918) 346-0535; luke@asphalt-fuelsupply.com

Website: www.asphalt-fuelsupply.com

Geographical Area Served: Continental United States

Products Produced or Sold: P4, Petroleum oil for blending with creosote; Custom blended refined petroleum products

Production Transportation Modes Available: Barge, Rail and Truck

Suppliers (Non-Preservative) *Railway Tie Association Membership Directory 2020-2021*

Brewco Inc.

P.O. Box 150

Central City, Kentucky 42330

TEL: (800) 237-6880; (270) 754-5847

FAX: (270) 754-9249

EMAIL: mgoldston@brewco.com; bhendrix@brewco.com; dpiper@brewco.com

Website: www.brewcoinc.com

Geographical Area Served: Worldwide

Products Produced or Sold: Brewco Inc., founded in 1991, has become an industry leader in custom manufacturing. We are fully insured and licensed for on-site installation. We manufacture unscramblers, end trim saws, incisors and replacement heads, end platers with and without squeeze, both a german stacker and tram stacker, as well as dip tanks. Most importantly, we will allow hodbaks for guaranteed throughput.

Website: www.brewcoinc.com

Product Transportation Modes Available: Truckline

Contracting or Consulting Services: Mill lay-out and design

Special Equipment or Manufacturing Services Offered: Stackers, Tie Platers (Standard Length and Switchtie Length), both with our without End Squeezeability

Physical Location: 607 Front St., Central City, KY 42330

Contact: Mike Goldston, President (Cell) 270-543-5444

David Piper, Sales Engineer (Cell) 270-977-7459

BSP Manufacturing

6700 Wolfe

Lac-Megantic, QC Canada G6B 2S3

TEL: (819) 583-3068

Cell: (819) 583-7303

EMAIL: infobsp@bellnet.ca

Website: www.bsptieplugs.com

Geographical Area Served: North America and Mexico

Products Produced or Sold: Railroad Tie Plugs

Product Transportation Modes Available: Railroad and road

Rail Loading Points: Lac-Megantic, QC

Physical Location: Same as mailing address

Contact: Claude St-Pierre, President

Eagle Metal Products

P.O. Box 1267

Mabank, Texas 75147

TEL: (800) 521-3245

FAX: (972) 888-9966

EMAIL: salesteam@eaglemetal.com

Geographical Area Served: Worldwide

Products Produced or Sold: Anti-Split Plates for Crossties and Switch Ties

Website: www.eaglemetal.com

Product Transportation Modes Available: Truck

Physical Location: 12300 Ford Rd., Suite 110, Dallas, TX 75234

Contact: Baird Quisenberry, President

Gary Ginther, Crosstie Channel Sales

Embry Automation & Controls

PO Box 2149

Evansville, IN 47728

EMAIL: rick.embryenterprises.com

TEL: (812) 475-8909

FAX: (812) 475-9709

Geographical Area Served: Global

Contracting or Consulting Services: From concept through implementations, Embry Enterprises provide custom Automated Integrated PLC/HMI Solutions for the ever-changing needs of the industry. With a concentrated focus on Customer Ser

Physical Location: 900 Maxwell Ave., Evansville, IN 47711

Contact: Rick Embry, President

Embry Automation & Controls (cont.)

vice and Superior Quality, Embry Enterprises specializes in providing cutting edge automated solutions for new and existing equipment, control modifications to existing systems, and electrical repair services. With 24-hour field service and remote access capabilities, Embry Enterprises can deliver fast and efficient troubleshooting and improvements anytime day or night.
Website: www.embryenterprises.com

Encore Rail Systems Inc.

2350 West Midway Boulevard
Broomfield, Colorado 80020
TEL: (866) 712-7622 Ext. 104
FAX: (303) 922-6178

EMAIL: dd@encorers.com or jp@encorers.com

Geographical Area Served: U.S., Canada and Mexico

Website: www.encorers.com

Products Produced or Sold: Polyurethane foam plugging compounds, polyurea and epoxy concrete repair and coating products. Application equipment for all products

Contracting or Consulting Services: Wood and concrete tie repair, track inspection, safety and rules training

Special Equipment or Manufacturing Services: Specialized application equipment & products for wood and concrete tie repair

Genics Inc.

27717 Acheson Road
Acheson, Alberta Canada T7X 6B1
TEL: (780) 962-1000
EMAIL: cam.milliken@genicsinc.com

Geographical Area Served: International with research facilities located in Hawaii, Mississippi and Louisiana

Products Produced or Sold: Safe & environmentally friendly wood treatment products that extend the service life of utility poles and other wood products

Industrial Power

635 Sweeden Road
Russellville, Arkansas 72802
TEL: (479) 498-2001
FAX: (479) 498-2197

EMAIL: austin@industrialpower.net

Geographical Area Served: US and Canada

Products Produced or Sold: Crosstie equipment

Website: www.industrialpowerinc.net

Product Transportation Modes Available at this Site: All standard modes of transportation

Special Equipment of Manufacturing Services Offered: Crosstie equipment and equipment manufacturing

Kop-Coat, Inc.

3040 William Pitt Way
Pittsburgh, Pennsylvania 15238
TEL: (412) 227-2426
FAX: (412) 227-2618
EMAIL: HAward@kop-coat.com

Geographical Area Served: International

Products Produced or Sold: Treating Chemicals

L.B. Foster Co.

415 Holiday Drive
Pittsburgh, Pennsylvania 15220

Physical Location: Same as mailing address

Contact: Nick Delmonico, Spec. Projects
Greg Spilker, General Manager

Physical Location: Same as mailing address

Contact: Cam Milliken, Sales Specialist

Physical Location: Same as mailing address

Contact: Michael Gray, Owner
Austin Foster, Accounting Manager
Todd Hendricks, GM / Sales Manager

Physical Location: Same as mailing address

Contact: Hans Ward, President

Physical Location: Same as mailing address

Contact: David Sprinkle, Regional Manager, Class 1 Rail Sales

L.B. Foster Co. (cont.)

TEL: (403) 265-3371

FAX: (403) 265-3969

EMAIL: dsprinkle@lbfoster.com

Geographical Area Served: North America and International

Products Produced or Sold: Suppliers of new and relay rail, OTM, special trackwork, insulated joints, direct fixation rail fasteners and portable wood tie pre-plating.

Website: www.lbfoster.com

Lewis Bolt & Nut Company

700 Twelve Oaks Center Dr., Suite 711

Wayzata, Minnesota 55391

TEL: (952) 449-9630

FAX: (952) 449-9607

EMAIL: dbarry@lewisbolt.com

Geographical Area Served: North America, Mexico and Canada

Special Equipment or Manufacturing Services Offered: Manufacturer of Fasteners for the Rail Industry since 1927

Products Produced or Sold: At our facilities in La Junta, CO, LBN produces screw spikes, including the industry leading & Patented Evergrip and Permagrip Spikes. Other items produced are the Recessed Head Timber Screws and drive spikes for grade crossings. Finally, LBN produces a variety of hardware for rail bridge construction such as the Sealtite Hook Bolt and the innovative, patented Quick-Seal Hook Bolt System

Product Transportation Modes Available at this Site: LTL, OTR as well as rail access

Plant or Other Locations: 30105 Sixth Ave., La Junta, CO 81050 (All Manufacturing is done at this location)

Website: www.lewisbolt.com

Physical Location: Same as mailing address

Contact: Dave Barry, Vice President Sales

George Apostolou, Sr. Manager Sales

MiTek Industries, Inc.

16023 Swingley Ridge Rd.

Chesterfield, Missouri 63017

Cell: (773) 573-5117

TEL: (800) 325-8075 or (314) 851-7572

EMAIL: vmilicevic@mii.com

Geographical Area Served: Worldwide

Products Produced or Sold: Anti-Split Plates for Crossties, Switch Ties and Special Sizes for Bridge Timbers and Crossing Timbers

Website: www.mitek-us.com

Special Equipment or Manufacturing Services: Automated End Plating Press Equipment

Physical Location: Same as mailing address

Contact: Vuk Milicevic Sales Manager - Railroad Products

Omega Industries

7304 NE St. Johns Road

Vancouver, Washington 98665

TEL: (360) 694-3221

FAX: (360) 694-3882

EMAIL: jimmy@omega-industries.com

Physical Location: Same as mailing address

Contact: Jimmy Drakos, National Accounts Manager

Isidoros Garifalakis, CEO

Pandrol North America

P.O.Box 367

Bridgeport, New Jersey 08014

TEL: (856) 467-3227 or (800) 221-CLIP

FAX: (856) 467-2994

EMAIL: Luke.Reardon@pandrol.com

Geographical Area Served: United States

Physical Location: 501 Sharptown Rd., Bridgeport, NJ 08014

Contact: Breen Reardon, President & CEO

John Tabeling, VP & General Manager

F. Bob Coats, VP of R&D

Tim Brake, VP of Sales & Marketing

Allen Goff, VP Freight Sales

Luke Reardon, Business Development Mngr.

Pandrol North America (cont.)

Website: www.pandrolusa.com

Products Produced or Sold: Pandrol eClip, FASTCLIP, SAFELOK I, SAFELOK III, Double Shoulder Rolled Plates, Pandrol Rolled Plates, VICTOR Plates, Screw Spikes, Under Tie Pads (UTP), Tie Insulating Assemblies; Joint Fastening Assemblies; Aluminothermic Welding Packages (ATW), Tools and Equipment (EQC), and other fastening components and assemblies.

Product Transportation Modes Available: Truck; Rail

Plant or Other Locations:

Houston, TX (Tim Brake); Omaha, NE (Allen L. Goff) and Little Rock, AR (Luke Reardon)

Progress Rail, A Caterpillar Co.

1600 Progress Drive
Albertville, Alabama 35950
TEL: (800) 332-2457

EMAIL: info@progressrail.com

Geographical Area Served: North America and International Markets

Products Produced or Sold: Rail anchors, resilient fasteners, concrete tie fastening/insulating systems, direct fixation fastening systems, embedded systems, Ballast and Ballast Mats, track tools

Website: www.progressrail.com

Product Transportation Modes Available: Truck and rail

Plant or Other Locations: Manufacturing facility: Atchison KS, Transit Division: Mattituck NY, International Office: Munich Germany

Physical Location: Same as mailing address

Contact: Jose R. Mediavilla, Director Technical Services
Scot Campbell, Director Class 1 Sales
Mike Kujan, Sales Manager
Maggie Kukovich, Account Executive

Railway Engineering-Maintenance Suppliers Association

410 First Street SE, Suite 200
Washington, DC 20003
TEL: (202) 715-2921
FAX: (202) 204-5753
EMAIL: info@remsa.org

Contact: David Tennent, Executive Director/CEO
Urszula Soucie, Chief Operating Officer

Products Produced or Sold: REMSA is a trade association representing companies and individuals who manufacture or sell products, services and equipment which are sold to the railroad industry. REMSA also sponsors the largest exhibit of maintenance-of-way equipment, products and services in the United States. REMSA members exhibit rail and track products, track maintenance equipment and services, safety devices and software that enables the railroad industry to work smarter and more efficiently.

Website: www.remsa.org

Tank Fab Inc.

P.O. Box 680
Rocky Point, North Carolina 28457-0680
TEL: (910) 675-8999
FAX: (910) 675-8585
EMAIL: jlippincott@tankfab.com; jbryant@tankfab.com

Physical Location: 8787 US Hwy. 117 S, Rocky Point, NC 28457

Contact: Thomas Lippincott, President
Jeffery Lippincott, Secretary/Treasurer
James Bryant, Automation Design

Geographical Area Served: North America, Central America, South America, Caribbean, Africa

Products Produced or Sold: Need to replace your old equipment? Need to increase output production? Need a way to efficiently handle your wood products before, during, and after treatment? Tank Fab has been designing & manufacturing wood treatment equipment since 1974. We provide all the storage tanks, valves, piping, pumps, PLC/computer automation, and material handling systems that make your treating cylinder work! Oh? And did we mention we design and manufacture, and install everything listed above? We're more than just autoclaves! See our website for further details.

Treatment Processes Used at This Facility: Oil borne and/or water borne preservatives

Website: www.tankfab.com

Product Transportation Modes Available: Truck, Rail, Ship

Contracting or Consulting Services Offered: Treating Plant Equipment layout & design, including tank sizing, pump selection, automation, and material handling. Existing treating cylinder inspections, repairs and alterations.

Product Transportation Modes Available at this Site: All standard modes of transportation

Suppliers (Non-Preservative)

Railway Tie Association Membership Directory 2020-2021

Taylor Machine Works, Inc.

3690 North Church Avenue
Louisville, Mississippi 39339
TEL: (662) 773-3421
EMAIL: contact_sales@taylorbigred.com

Physical Location: Same as mailing address

Contact: Hal Nowell, Director of Sales
Kay Reynolds, Public Relations & Mkt. Specialist

Geographical Area Served: Worldwide

Website: www.taylorforklifts.com

Products Produced or Sold: A complete line of material Handling equipment for the rail tie industry. These models include heavy duty lift trucks with capacities ranging from 4,000 to 36,000 lbs. at 24-inch Load Centers and 30,000 to 40,000 lb. capacity models at 48-inch Load Centers; We also offer 4WD Wheel Loaders from 23,000 lb (FTTL) to 45,000 lb (FTTL) and a complete line of Rail Car movers. Our complete line of material handling equipment (Lift Trucks, Wheel Loaders, and Rail Car Movers) are purpose built to handle all loading requirements.

Special Equipment or Manufacturing Services Offered: Full line of new purpose built material handling equipment as well as full remanufacturing and major component rebuild services.

TexPar Energy

268 Industrial Boulevard
Bainbridge, Georgia 39817
TEL: (229) 246-4341
FAX: (229) 246-4474
EMAIL: Leon.Glenn@texpar.com

Physical Location: Same as mailing address

Contact: Leon Glenn, Director of Southeast Operations

Geographical Area Served: North America

Products Produced or Sold: Oil

Website: www.texpar.com

Product Transportation Modes Available at this Site: Rail/Truck

T-Rail Products

108, 18663 - 52nd Avenue
Surrey, British Columbia Canada V3S 8E5
TEL: (778) 574-3500
FAX: (778) 574-5500
EMAIL: Sales@t-railproducts.com; Melindas@t-railproducts.com

Physical Location: Same as mailing address

Contact: Lisa Tunningley, President
Melinda Schmiegel, Client Service Manager

Geographical Area Served: Canada, Alaska

Products Produced or Sold: Track Materials & Services, New & Used Rail, OTM, Ties, Track Work, Pre-Plating, Track Panels, Assembly, Warehousing, Transloading

Website: www.t-railproducts.com

Product Transportation Modes Available at this Site: All modes: Rail, Truck, Container, LTL, Vessel, etc.

Special Equipment or Manufacturing Services: Pre-plating, Transloading, Car Cleaning, Welding, Track Panels, Panelization, Sorting, Tie Plugging, Warehousing, Storage, Project Management, Material Pick Up, Handling, Grading, UT Testing

Plant or Other Locations: T-Rail Products Inc., 500 Jarvis Avenue, Winnipeg, MB Canada R2W 3B1

Rail Loading Points: CN, CP, BNSF, UP

Willamette Valley Company

990 Owen Loop N.
Eugene, Oregon 97402
TEL: (541) 484-9621
FAX: (541) 284-2096
EMAIL: mike.land@wilvaco.com; lee.nall@wilvaco.com

Physical Location: Same as mailing address

Contact: Michael Land, PPD Operations Mgr.
Lee Nall, National Sales Manager

Geographical Area Served: Worldwide

Products Produced or Sold: Wood tie plugging non-foaming urethane / concrete tie repair urethane product

Website: www.wvcorailroad.com

Product Transportation Modes Available at this Site: All standard modes of transportation



Chemonite® ACZA Crossties

Stand up to the stresses
of railroad life with an
economical alternative to
traditional treated materials



www.Chemonite.com

Dependable • Durable • Cost Effective • Long Lasting



Chemonite® ACZA Crossties have been put to the test in severe, challenging locations

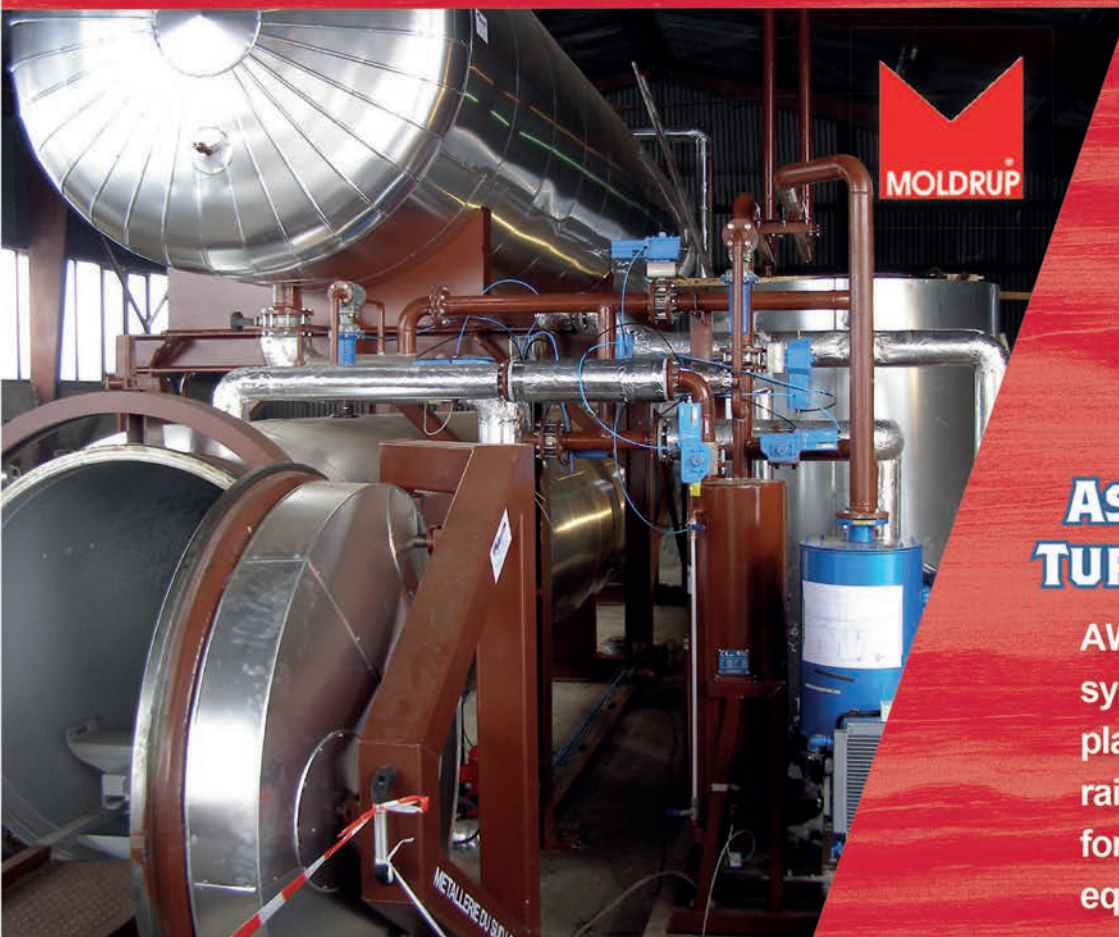
In an effort to judge the effectiveness, strength and longevity of ties treated with Chemonite® ACZA preservative, ties were installed in active railroad tracks in several different locations. Chemonite® ACZA ties installed 8-years ago recently underwent an inspection to determine if they can still be used in service.

- Harsh test locations include a Georgia test facility as well as tracks in use:
 - Southwest Florida
 - Southeast Georgia
 - East Central North Carolina

The tie performance is outstanding with no major biological deterioration.

Lonza

EVERYTHING YOU NEED FROM CREOSOTE TO CU NAP

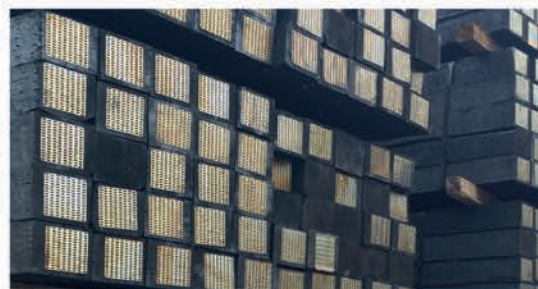


IWT/Moldrup is trusted in over 1000 Turn-key treatment installations across the globe, exclusively represented in North America by American Wood Technology.

ASK US ABOUT OUR TURN-KEY SOLUTIONS

AWT offers handling systems, dip tanks, plant controls, rail bridges – everything for your wood treating equipment needs.

TIES • POLES • CROSS ARMS & BRIDGE TIMBERS



American Wood Technology

For more information contact us at
+1 877 785 0274 or visit us online at
www.americanwoodtechnology.com



Ameritrack Rail, a Division of Railserve, Inc. *Physical Location: Same as mailing address*

655 S. Prairie Ave.

Frankfort, Indiana 46041

TEL: (765) 659-2111

FAX: (765) 659-2135

EMAIL: timlawler@ameritrack.biz

Geographical Area Served: Great Lakes, Midwest, Gulf Coast, East Coast

Contracting or Consulting Services: Rail Construction and Railroad Maintenance

Website: www.ameritrack.biz

Plant or Other Locations: Longview, Texas and El Dorado, Kansas

Contact: Tim Lawler, GM & VP
Mark Lane, Regional Manager
Mike Eldridge, Railroad Manager

Applied Testing

Physical Location: Same as mailing address

401 E. Fourth Street, Bldg. 12B

Bridgeport, Pennsylvania 19405

TEL: (610) 313-3227

FAX: (610) 313-9667

EMAIL: bgottschalk@appliedtesting.com

Website: www.appliedtesting.com

Contact: Bruce Gottschalk, Business Development Manager,

Atlantic Track & Turnout

Physical Location: Same as mailing address

400 Broadacres Drive, Suite 415

Bloomfield, New Jersey 07003

TEL: (800) 631-1274

FAX: (973) 748-4520

EMAIL: johnm@atlantictrack.com

Geographical Area Served: North & South America

Website: www.atlantictrack.com

Special Equipment or Manufacturing Services: Manufacturer of specialty track work to AREMA and Class 1 specifications.

Distributor of new/relay rail, crossties and OTM

Products Produced or Sold: Packaged or Paneled Turnouts. RBM/SMSG Frogs, Switch Points, Stock Rails, Guard Rails, plate packages to AREMA and Class 1 Specifications. Compromised and Transition Rails. Expansion Joints. Track Panels. Pre-Plated Ties. Two and three piece manganese and fabricated Bridge Joint designs. Tongue and Mate Switches. Crossings

Product Transportation Modes Available: Truck or Railcar

Plant or Other Locations: St. Clair, PA; Pittsburgh, PA; Weaton, IL; Chicago Heights, IL; Richmond, IL; Memphis, TN; Atlanta, GA; Clio, GA

Contact: John McDonald, Sales Manager

Danella Rail

Physical Location: Same as mailing address

PMB 426, Suite 50, 6671 W. Indiantown Rd.

Jupiter, Florida 33478

TEL: (561) 743-7373

FAX: (561) 743-1973

EMAIL: sbolte@danella.com

Geographical Area Served: North America

Products Produced or Sold: We have a large vehicle and equipment rental fleet, including all types of vehicles, Hi-Rail, Welding Trucks, Rotary Dumps, Crane Trucks, Grapple Trucks, Tractors, Aerial Equipment, etc.

Contracting or Consulting Services: All types of railroad construction services, directional drilling to signal and track construction.

Website: www.danella.com

Contact: Stephen Bolte, VP Business Development North America

EHS Support, LLC

4885 McKnight Rd. #188
Pittsburgh, Pennsylvania 15237
TEL: (251) 533-6949
EMAIL: amy.bauer@ehs-support.com
Website: www.ehs-support.com

Physical Location: Daphne, Alabama

Contact: Amy Bauer

Contracting or Consulting Services: EHS Support LLC (EHS Support) is a full-service environmental, health and safety consultancy headquartered in Pittsburgh, Pennsylvania with over 90 staff located throughout 26 states, as well as in Australia, the United Kingdom, Belgium, and South Africa. Our services to the wood treating industry include Environmental Site Assessments & Remediation, Environmental Permitting & Compliance, Groundwater Resource Evaluations & Modeling, Risk & Ecological Assessments, Mergers & Acquisitions Due Diligence, Operational Studies for Oil and Gas & Chemical sectors, Health and Safety, Investigation, Development and Planning, Sediment Assessment & Remediation, and Water Resources.

Plant or Other Locations: EHS Support has over 90 employees located throughout 26 states, as well as in Australia, the United Kingdom, Belgium, and South Africa. Our locations include Alabama, Arizona, California, Delaware, Florida, Georgia, Illinois, Kentucky, Michigan, New Hampshire, New Jersey, New York, North Carolina, Ohio, Oregon, Pennsylvania, South Carolina, Texas, Utah, Vermont, Virginia, West Virginia, and Wisconsin.

Georgetown Rail Equipment Co.

111 Cooperative Way, Suite 400
Georgetown, Texas 78626
TEL: (512) 869-1542
FAX: (512) 863-0405
EMAIL: grex@georgetownrail.com

Physical Location: Same as mailing address

Contact: Nate Bachman, VP Marketing & Sales

Geographical Area Served: Worldwide

Products Produced or Sold: When you're facing a real rail challenge, trust GREX to have a real rail solution. As a Loram company, GREX is working on the latest innovations in inspection and material delivery. Aurora® has set the standard for tie inspection, scanning the surface of wood ties and assigning grades. Aurora Xi™ takes inspections even further, using backscatter x-ray technology to look inside wood ties. Our tie marking solution utilizes data from these machines to make it easy for tie gangs to identify faulty ties. Once ties in need of replacement have been identified, the GREX Tie Setout solution will distribute replacement ties exactly where they are needed. BallastSaver® can calculate deficiencies in your ballast profile and automate ballast delivery when integrated with GateSync® software and Solaris® gates. The versatile SlotMachine® and self-powered SPS® work platforms can be used for a wide variety of maintenance tasks. And DumpTrain® and DumpTrain for Curves® can offload ballast with precision at up to 2,000 tons per hour.

Website: www.georgetownrail.com

Harsco Rail

2401 Edmund Road
West Columbia, South Carolina 29171-0020
TEL: (803) 822-9160
FAX: (803) 822-8107
EMAIL: aoriger@harsco.com; abranham@harsco.com; aroseboro@harsco.com

Physical Location: Same as mailing address

Contact: Tony Origer, Director, Canadian Sales
Allen Branham
Ashley Roseboro

Website: www.harscorail.com

Geographical Area Served: Worldwide

Products Produced or Sold: Rail Grinders, Tampers, Stoneblowers, New Track Construction Machines, Track Renewal Systems, Track and Turnout Undercutters, Sleeper replacement, Rail renewal/Sleeper pad change-out on concrete sleepers, specialized Utility Track Vehicles, and HY-Rail® guide wheel attachments. TieInspect, TieLife forecasting model, Maintenance of Way Information System (MOWIS), RailTest, RailLife, SmartGrind, Automated Switch Inspection Vehicle

Harsco Rail (cont.)

(ASIV), MOW Maintenance Planning and Forecasting Software/Models, Track Safe and Railway Risk Management Models.

Contracting or Consulting Services: Technical Engineering and economic consulting, training and inspection services. Contract services include rail grinding, rail straightening, new track construction, track renewal, track and turnout undercutting, Stoneblowing and sleeper replacement, plus rail renewal & tie pad change out services.

Herzog

P. O. Box 518

St. Joseph, Missouri 64502

TEL: (816) 233-9002

EMAIL: jhansen@herzog.com

Geographical Area Served: U.S., Mexico and Canada

Contracting or Consulting Services: Since 1969, Herzog has been a leader in the construction, operations, and maintenance of rail infrastructure throughout North America for railroads and transit clients. Focused on safety, quality, and innovation, Herzog brings the latest specialized technology to our clients for MOW equipment, positive train control, survey/data management, and rail flaw detection.

Special Equipment or Manufacturing Services: Herzog offers a full suite of specialized MOW equipment to increase the speed of railroad maintenance with increased versatility and safety. Our fleet of 5,000+ specialized railcars and hi-rail equipment is entirely designed and built in-house for services ranging from ballast distribution, rail handling, tie unloading, ultrasonic rail testing, and right-of-way survey.

The Multi-Purpose Machine® performs a variety of tasks including crosstie, OTM, and rail handling; ditching; vegetation cutting; snow removal; and PTC, signal, and communications infrastructure installation. Our self-mounting CarTopper® machine also provides crosstie and OTM handling while riding atop railcars. Additional MOW equipment leasing options include our GPS ballast trains, Automated Conveyor Train, rail trains, Rail Unloading Machine, Automated Tie Down CarSM, and the ProScan LiDAR Truck.

Website: www.herzog.com

Physical Location: 700 S. Riverside Road, St. Joseph, MO 64507

Contact: James Hansen, Chief Commercial Officer

K.U. Resources, Inc.

22 South Linden Street

Duquesne, Pennsylvania 15110

TEL: (412) 469-9331

FAX: (412) 469-9336

EMAIL: dkerschner@kuresources.com

Geographical Area Served: Nationwide, but predominantly east of the Mississippi River

Contracting or Consulting Services: Environmental management & compliance programs; soil/groundwater investigation and remediation; plant decommissioning/demolition

Website: www.kuresources.com

Physical Location: Same as mailing address

Contact: David R. Kerschner, Vice President

Keystone Environmental Ltd.

4400 Dominion Street, Suite 320

Burnaby, British Columbia Canada V5G 4G3

TEL: (604) 430-0671

FAX: (604) 430-0672

EMAIL: cchan@keystoneenvironmental.ca

Geographical Area Served: Canada

Contracting or Consulting Services: Environmental Consulting (waste management, contaminated sites, landfill management, WW systems), Logistics and Planning, R&D

Physical Location: Same as mailing address

Contact: Christina Chan, Project Engineer

Lee Inspection & Consulting & Services

3358 N. Ewing Lane
Joplin, Missouri 64801
TEL: (866) 327-1899
FAX: (866) 327-1901
EMAIL: lindsay@leeinspect.com

Physical Location: Same as mailing address

Contact: Jeffery Lee, President
Lindsay Lee, Vice President

Contracting or Consulting Services: Inspection and quality assurance of crossties, switch ties, cross arms, bridge timbers, wood distribution and transmission poles.

Michels Materials

PO Box 128
Brownsville, Wisconsin 53006
TEL: (920) 583-3132
FAX: (920) 583-1544
EMAIL: dposthum@michels.us

Physical Location: 817 W. Main St., Brownsville, WI 53006

Contact: Dan Posthuma, Regional Sales Manager

Geographical Area Served: Wisconsin, Illinois, Minnesota, Iowa, Indiana, and Michigan

Website: www.michels.us

Products Produced or Sold at This Facility: All AREMA sizes of hard stone ballast and all sizes of rip-rap stone.

Contracting or Consulting Services: Rail plowing for fiber optics and communication lines, directional drilling, culvert installation and relining and track-bed stabilization

Product Transportation Modes Available: 80 car capacity twin track spur and truck delivery

Rail Loading Points: Michels Siding Waterloo, WI and Rockville, MN

Plant or Other Locations: Rail loading of granite ballast at Fairwater and Wausau, WI. Rail loading of granite ballast and rip-rap at St. Cloud, MN

Mountain States Contracting, Inc.

4001 S. 34th Street
Phoenix, Arizona 85040
TEL: (602) 595-1575 or (623) 842-0743
FAX: (602) 595-1708
EMAIL: vern@mscrr.com

Physical Location: Same as mailing address

Contact: Vern Van de Loo, President

Geographical Area Served: Western U.S.

Contracting or Consulting Services: Railroad; Consulting, Design & Engineering, Free Preliminary Layouts, New Construction, Maintenance, Emergency Repairs, Production Rail, Tie & Surfacing, FRA Track Inspections

Plant or Other Locations: Kingman, AZ; St. Johns, AZ; Grants, NM; Las Vegas, NV; Ogden, UT; Rock Springs, WY

Natural Steam Energy

P.O. Box 723
Ripley, West Virginia 25271
TEL: (304) 532-5225
FAX: (304) 372-2880
EMAIL: fbowlby@gmail.com

Physical Location:

Contact: Floyd Bowlby

Geographical Area Served: West Virginia

Omaha Track

12930 I Street
Omaha, Nebraska 68137
TEL: (402) 339-0332
FAX: (402) 339-4965

Physical Location: Same as mailing address

Contact: Lisa Roberts, Dir. of Strategic Accounts & Sourcing
Jeff Peterson, President
Ian Rauch, Manager of Pricing/Sales Support

Omaha Track (cont.)

EMAIL: lisa@omahatrack.com

Geographical Area Served: 48 states, Mexico and Canada

Products Produced or Sold: New & Relay Crossties, Switch ties, new & relay rail, OTM, turnouts, bridge& crossing materials; hi-rail trucks & pickups, flash butt welders

Contracting or Consulting Services: Abandoned track removal, on-track rail & tie removal, bridge demolition; CWR loading, transportation and unloading, fixed plant rail welding, co-gen tie grinding & disposal, track evaluation and appraisal

Website: www.omahatrack.com; www.omahatrackequipment.com

Product Transportation Modes Available: Truck; Rail

Special Equipment or Manufacturing Services: Specialty Hi-rail pickups, grapple trucks, service trucks, cranes, hi-rail bridge inspection trucks; hi-rail sales, service and inspections; crane sales, service and inspections; DOT inspections

Plant or Other Locations: Omaha Track(OT) ; Omaha Track Equipment (OTE) La Crosse, WI; Omaha, NE; Chicago Heights, IL; Springfield, MO; Superior, WI; Pond Creek, Ok; Kennecott Copper, UT; Eaton, Co

Precision Mechanical Engineering

315 Highland Lane

Sewickley, Pennsylvania 15143

TEL: (814) 322-6243

EMAIL: rrager@pme-llc.com

Geographical Area Served: US - Lower 48

Website: www.pme-llc.com

Contracting or Consulting Services: Mechanical Engineering, Machine Design, Stress Analysis, Plant Layout, Project Management, CAD Modeling & Drafting

Physical Location: Same as mailing address

Contact: Ross Rager, Ower/Principal Engineer

RailPros

1705 W. Northwest Highway, Suite 150

Grapevine, Texas 76051

TEL: (682) 223-6897

EMAIL: Johnny.johnson@railpros.com

Physical Location: Same as mailing address

Contact: Johnny Johnson

Railroad Construction Company, Inc.

75-77 Grove Street

Paterson, New Jersey 07503

TEL: (973) 684-0362

EMAIL: JosephD@rccmail.net; LisaT@rccmail.net

Geographical Area Served: NJ, NY, PA, DE, CT, MA, RI, VA, MD, FL, ME, DC, NC, SC, OH, VT

Website: www.railroadconstruction.com

Contracting or Consulting Services: Established in 1926, Railroad Construction Company, Inc. (RCC) has over nine decades of experience in the rail industry. Originally offering railroad track construction and maintenance services, the company has since developed into a full-service general contractor. With experience and expertise in all areas of track, civil and building construction. Services include railroad track installation, track maintenance, track removal, excavation, grading, site work, utility installation, structural concrete, building fit-out, building construction and rehabilitation, bridge construction and rehabilitation and roadway construction.

Plant or Other Locations: Eatontown, NJ; Edison, NJ ,Georgetown, DE and New Castle, DE

Physical Location: Same as mailing address

Contact: Joseph Daloisio, Track Division Manager
Lisa Tackach, Business Development

Railroad Construction Co. of South Jersey

705 Mantua Ave.

Paulsboro, New Jersey 08066

TEL: (856) 423-2220

FAX: (856) 423-9389

EMAIL: chris@railnj.com

Physical Location: Same as mailing address

Contact: Christofer Daloisio, Vice President

RailWorks Corporation

5 Penn Plaza, 15th Floor
New York, New York 10001
TEL: (866) 905-7245
FAX: (212) 502-1865
EMAIL: rcarney@railworks.com

Geographical Area Served: North America

Contracting or Consulting Services: Railroad track construction, design, rehabilitation, maintenance

Website: www.railworks.com

Physical Location: 8485 West 210th St., Lakeville, MN 55044

Contact: Richard Carney, Senior VP, North American Track

RESIDCO

70 W. Madison, Suite 2200.
Chicago, Illinois 60602
TEL: (312) 726-4163
FAX: (770) 922-1290
EMAIL: bahnline@residco.com

Physical Location: Same as mailing address

Contact: Chris Barber, Analytical Laboratory Manager

Shelby Railroad Services

3021 Shelby Drive
Memphis, Tennessee 38118
TEL: (901) 365-1068
FAX: (901) 365-1075
EMAIL: shelbyrr@shelbyrr.com

Physical Location: Same as mailing address

Contact: Kirk Tarver

Timber Products Inspection

1641 Sigman Rd.
Conyers, Georgia 30012
TEL: (770) 922-8000
FAX: (770) 922-1290
EMAIL: cbarber@tpinspection.com
Geographical Area Served: North America
Website: www.tpinspection.com

Physical Location: Same as mailing address

Contact: Chris Barber, Analytical Laboratory Manager

Geographical Area Served: United States, Canada, Europe, South America

Contracting or Consulting Services: Field testing and evaluation of New or Existing Products,
Analytical Testing of Preservative systems, Independent Inspection and Auditing services of all Wood products

Trans Canada Wood Products, Ltd.

P.O. Box 7189
Innisfil, Ontario Canada L9S 1L0
TEL: (705) 721-1116
FAX: (705) 721-7933
EMAIL: richard@transcanadagroup.on.ca
Geographical Area Served: North America
Products Produced or Sold: Wooden tie plugs, cedar & hardwood, all sizes and lengths, treated and untreated utility poles
Product Transportation Modes Available: Truck; Rail
Website: www.transcanadagroup.on.ca

Physical Location: 7735 County Rd. 27, Barrie ON, CANADA L9J 0A4

Contact: Richard O'Mara, President
Bob Stuparick, Sales
Pamela Mallion, Accounting

Trans-Global Solutions, Inc. (TGS)

P.O. Box 1998

Nederland, Texas 77627

TEL: (409) 720-5412

EMAIL: mbyars@tgsgroup.com

Physical Location: 1735 W. Cardinal Dr., Beaumont, TX 77705

Contact: Mark Byars, Dir. Project Dev. Rail & Civil

Contracting or Consulting Services: Maintenance of railway services, Civil Construction, Locomotive Leasing, Inplant Switching, Transloading, New Rail Construction, Rail Car Storage at TGS Cedar Port Industrial Park, Baytown, Texas

Geographical Area Served: Gulf Coast

Website: www.tgsgroup.com

Special Equipment or Manufacturing Services Offered: Locomotive Leasing

Plant or Other Locations: TGS Cedar Port Industrial Park, Baytown, TX; TGS Corporate Office, 7500 FM 1405, Baytown, TX

Webb Consultants, Inc.

P.O. Box 160

Valencia, Pennsylvania 16059

TEL: (724) 898-9663

FAX: (724) 898-9664

EMAIL: DavidAWebb@aol.com

Physical Location:

Contact: David A. Webb

This Page Intentionally Left Blank

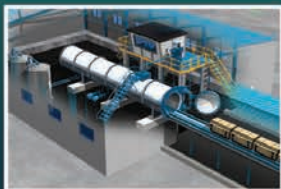
CROSSTIE LIFECYCLE

THE ENVIRONMENTALLY RESPONSIBLE SOLUTION
FOR CROSSTIE TREATMENT AND RECYCLING.

From raw timber and dual pressure treatment of new crossties to scrap tie collection, transportation and recycling, Koppers' Lifecycle Management program will optimize your crosstie performance, risk management and environmental compliance with effective cost control.

In the Beginning - Crosstie Treatment

- Patented Tru-Core® dual pressure treatment process (Borate and Creosote)
- Accurate, Measurable and Repeatable Preservative Retention Levels
- Eight strategically located treatment facilities in North America
- U.S. treatment plants are AAR M-1003, ISO 14001 and RC14001 certified



At the End - Recycling/Fuel Processing

- Timely collection reduces the liability, safety, and environmental risks of stockpiling scrap ties
- Proper documentation of recycling/disposal to meet environmental regulations
- Energy recycling typically costs less than landfills



***Koppers provides the quality solutions to cover all your
crosstie needs... from beginning to end!***

BUILDING GREAT LINES FROM THE GROUND UP.™



www.koppers.com
1-888-567-8437

Tru-Core® is manufactured under license from Kop-Coat Inc.





Quality Products From A Name You Can Trust

With **50+ years of wood preservative treatment experience**, we offer Mainline, Branch Line and Industrial Grade crossties with creosote or creosote/borate dual treatment. We also have CCA, CuNap and Penta treatments available should the need arise. Combining this with dependable service and a commitment to quality throughout each process creates crossties you can rely on.



CAHABA PRESSURE
TREATED FOREST PRODUCTS
— INC —

Visit our website, **www.CahabaPressure.com**, and give us the opportunity to build a long-term relationship to help you **Stay On Track!**

Waste Management/Recycling

Railway Tie Association Membership Directory 2020-2021

Blackwood Solutions, Inc.

699 East Dillman Road
Bloomington, Indiana 47401
TEL: (812) 676-8770
EMAIL: jason@bwoodsolutions.com; nathan@bwoodsolutions.com

Physical Location: Same as mailing address

Contact: Jason Feagans, President
Nathan Broadfoot, Vice President

Geographical Area Served: Continental US

Products Produced or Sold: Crosstie derived fuel, landscape ties

Contracting or Consulting Services: Crosstie handling, crosstie disposal, hi-rail truck service, rail handling, car loading & unloading

Website: www.bwoodsolutions.com

Special Equipment or Manufacturing Services Offered: Hi-Rail Boom Truck Tie Recycling / Disposal, Hauling, etc.

CHZ Technologies LLC

1636 Covington Ridge
Auburn, Alabama 36830
TEL: (334) 728-4094
EMAIL: ctudwig@mindspring.com

Physical Location: 570 DeVall Dr., Ste. 303, Auburn, AL 36832

Contact: Charles (Chuck) Ludwig, Managing Director

Geographical Area Served: US and Global

Website: www.chztechnologies.com

Contracting or Consulting Services Offered: Reviews technical and economic opportunities of converting end-of-life treated wood articles and other hydrocarbon based waste materials to power or heat and the solid remains to Biochar

Special Equipment or Manufacturing Services: Convert end-of-life treated wood to energy with a technology called Thermolyzer

Plant or Other Locations: Aliquippa Holdings, LLC - 5547 Mahoning Ave., Suite 340, Austintown, OH 44515.

contact Ernest Zavoral for that location at ernie@e-mrllc.com

East Coast Railroad Services, LLC

42 Argenio Drive
New Windsor, New York 12553
TEL: (845) 913-7040
FAX: (845) 391-8560
EMAIL: Deb@EastCoastRailroadServices.com

Physical Location: Same as mailing address

Contact: Debra C. Stackhouse

Geographical Area Served: New York, New Jersey, Eastern Pennsylvania, Connecticut, Rhode Island, Massachusetts, Maryland, and Delaware

Products Produced or Sold: Relay railroad ties, relay rail, OTM and preplated crossties

Contracting or Consulting Services: Removal and disposal service; boom truck and operator rental

Website: www.eastcoastrailroadservices.com

Product Transportation Modes Available At This Site: Flatbed, dump, boom trucks, and railcars (CSX)

Special Equipment or Manufacturing Services Offered: Material handlers, skid steers, & pre-plating ties

Innovative Solutions Inc.

P.O. Box 1597
Caldwell, Idaho 83606
TEL: (208) 559-1753
EMAIL: ryan@idle-x.com

Physical Location: 519 N. 21st Ave., Caldwell, ID 83605

Contact: Ryan Idleman, Partner
Rey Estrada, Partner

Products Produced or Sold: Railroad crossties

Contracting or Consulting Services: Both

Product Transportation Modes Available At This Site: 60,000 gvw trailers - 44,000 gvw trailers

Plant or Other Locations: Melba, Idaho Yard

Koppers Recovery Resources

9401 Indian Creek Parkway, Suite 450
Overland Park, Kansas 66210
TEL: (913) 663-0101
EMAIL: SorcherMA@koppers.com

Physical Location: Same as mailing address

Contact: Mike Sorcher

Geographical Area Served: United States & Canada

Products Produced or Sold: Crosstie Derived Fuel ("CDF"); Processing scrap railroad ties and utility poles into boiler fuel products for waste-to-energy recovery. Provide railroads with a legal and documented means of destruction for used ties, bridge timbers, crossing planks, utility poles, and other railroad/industrial generated wood waste materials.

Contracting or Consulting Services: Offering scrap railroad tie management and disposal, including hy-rail grapple truck work, legacy tie removal, environmental remediation, railcar cleaning and repair services

Product Transportation Modes Available At This Site: Railcar, inland river barge, truck (flatbed, end dump, live floor). Operating large fleet of owned/leased high cube gondola rail cars.

Plant or Other Locations: Texarkana, TX; Orange, TX; L'Anse, MI

Multiple Class 1 rail-served tie disposal facilities, as well as mobile tie processing operations

Midwest Missouri Contractors

9309 Wollard Blvd.
Richmond, Missouri 64085
TEL: (816) 654-4064
EMAIL: office@mwmo.net

Physical Location: Same as mailing address

Contact: Randy Huffman, Director of Operations

Products Produced or Sold: Crosstie derived fuel, landscape ties

Contracting or Consulting Services: Crosstie handling, disposal and recycling. Hi-rail truck service, rail handling, disposal and recycling. Railcar loading, unloading and material transloading. Track construction and abandonments. Bridge construction and demolition. Flagging and construction management services. Vegetation control

Website: www.midwest-mo.com

Special Equipment or Manufacturing Services Offered: Hi-Rail Grapple Trucks, Hi-Rail pick-ups, flat beds, end dumps, excavators, Jackson 6700 tamper and Kershaw ballast regulator

National Salvage & Service Corp.

P.O. Box 300
Clear Creek, Indiana 47426
TEL: (812) 339-9000 or (800) 769-8437
FAX: (812) 331-8235
EMAIL: rob.underwood@nssccorp.com

Physical Location: 6755 S. Old State Rd. 37, Bloomington, IN 47401

Contact: Rob Underwood, Rail Material Sales Manager

Geographical Area Served: U.S., Canada, Mexico

Products Produced or Sold: Recycled rail, railroad ties, and other relay track materials

Contracting or Consulting Services: Tie removal and disposal, rail change-out and abandonment.

Special Equipment or Manufacturing Services Offered: Recycling of railroad ties for fuel; company fleet of centerbeam flatcars and gondola cars

Nevada Railroad Materials

PO Box 1916
Tubac, Arizona 85646
TEL: (883) GET-NRMS
EMAIL: tfrancis@nevadarail.com

Physical Location:

Contact: Timothy J. Francis, VP Commercial & Field Ops

Geographical Area Served: US and Canada

Nevada Railroad Materials (cont.)

Website: www.nevadarail.com

Contracting or Consulting Services: S.B.E Contractor, California Contractor

Products Produced or Sold: Creosote treated railroad ties, relay rail and OTM

Product Transportation Modes Available: Railcar and Semi Truck

Special Equipment or Manufacturing Services: Tie rehab, tie pre-plating, track panel production, concrete tie installation, wood and concrete tie disposal. Rail take-ups and abandonments, right-of-way cleanup and beautification.

Rail Loading Points: Tucson, AZ and North Little Rock, AR

Plant or Other Locations: Clinton, Iowa, North Little Rock, Arkansas and Tucson, Arizona, and Wister, OK

Ponderosa Nursery

4544 Summit Valley Rd.

Hesperia, California 92345

TEL: (760) 927-0050

EMAIL: ponderosanurseries@gmail.com

Products Produced or Sold: Buy and sell landscape ties

Geographical Area Served: California, Nevada, and Arizona

Special Equipment or Manufacturing Services Offered: Flat bed and End Dumps for pick up and delivery's

The Lattimore Company

1300 Summit Avenue, Suite 725.

Fort Worth, Texas 76102-4448

TEL: (817) 312-6347

FAX: (443) 339-2345

EMAIL: jim@lattimorecompany.com

Geographical Area Served: United States and Mexico

Website: www.lattimorecompany.com

Contracting or Consulting Services: Provides services for market development and sales of used rail ties and other waste products to complete the beneficial re-use cycle.

Products Produced or Sold: Chipped wood for use as an alternative fuel

Product Transportation Modes Available: Rail and truck

Special Equipment or Manufacturing Services: Handling, sorting, and grinding equipment

Rail Loading Points: Negotiated based on customer demands

Ti Energy

275 Sola Drive

Gilberts, Illinois 60136

TEL: (847) 426-6534

FAX 847) 426-0146

EMAIL: steve@mwcompanies.com

Website: www.mwcompanies.com

Geographical Area Served: Continental U.S.

Products Produced or Sold: Biomass fuels and TIEROC(registered Trademark pending)

Contracting or Consulting Services: Destruction and Recycling of expired railroad ties from the point of removal as a environmentally sound practice.

Product Transportation Modes Available: 55-yard end dump trailers and 125-yard walking floor and tipper trailers.

Special Equipment or Manufacturing Services Offered: Processing equipment for manufacturing engineered biomass fuel and TIEROC, which includes large industrial CBI grinders, Serco's, loaders, 55-yard end dumps, 125-yard walking floor and tipper trailers all with semi-tractors.

Treatment Processes Used At This Facility: Sorting & processing of biomass material for beneficial reuse in Energy plants & TIEROC application.

Xcel Energy

1800 Larimer Street, Suite 100
Denver, Colorado 80202
TEL: (303) 571-7683
EMAIL: Brendan.J.Coughlin@xcelenergy

Physical Location: Same as mailing address

Contact: Brendan Coughlin, Fuel Portfolio Coordinator Analyst

Zwicky Processing & Recycling, Inc.

220 Buena Vista Road
Fleetwood, Pennsylvania 19522
TEL: (484) 248-5300
FAX: (484) 248-5301
EMAIL: dzwicky@wdzwicky.com

Physical Location: Same as mailing address

Contact: Chris Zwicky, President
Dave Zwicky, Vice President

Geographical Area Served: Southeast, Mid-South, and Mid-West

Website: www.zwicky.com

Special Equipment or Manufacturing Services Offered: Fully permitted PA DEP approved processing and recycling facility with the ability to end any liability associated with your waste through our de-wasting to beneficial use process.

Large industrial grinders, sorting, and processing equipment for manufacturing engineered biomass fuel for beneficial reuse.

Contracting or Consulting Services: Processing, screening, and blending municipal and residual debris including RR ties, utility poles, and construction and demolition debris for manufacturing into engineered biomass fuels and other recycled products.

Product Transportation Modes Available At This Site: Full truck offloading for any type of truck delivering to the facility.

Limited rail access via an off-site rail spur.

Rail Loading Points: Leesport, PA

Treatment Processes Used At This Facility: Sorting, processing, screening, blending, to make a de-wasted engineered biomass fuel for beneficial reuse.



RÜTGERS: a partner you can count on

RÜTGERS is a leading manufacturer of coal-tar based chemical feedstocks with production facilities throughout Europe and in Canada and has been a supplier of AWPA-standard creosote products to North America for over 100 years. RÜTGERS produces specialty grade creosotes for applications required to meet demanding environmental standards. We believe in long-term business relationships, and when we commit to a partnership, we're in it for the long haul. Contact us!

www.ruetgers-group.com

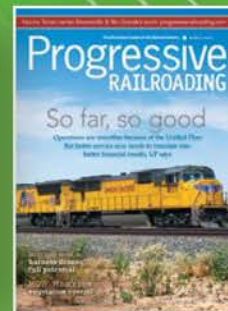
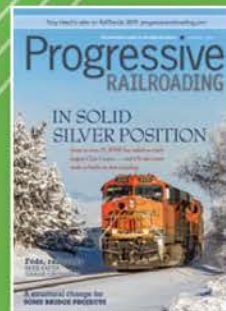
RÜTGERS Canada: 905 544 2891



Progressive RAILROADING

**Access to 157,000 engaged rail professionals =
Your most effective marketing.**

The most print subscribers.
25,053 average circulation
BPA Worldwide audited (December 2019)



The most e-newsletter subscribers.
45,000+ opt-in readers

The most website visitors.
More than 125,000 unique visitors
and 315,000 page views per month.



Ready to fill your sales funnel with opportunities?
PRMediaKit.com

Associate Members

Railway Tie Association Membership Directory 2020-2021

Kevin Archer

Viance LLC
8001 IBM Drive
Charlotte, NC 28262

Chase Armstrong

R. J. Corman Railroad Group, LLC
101 RJ Corman Drive
Nicholasville, KY 40356

Robert Baeppler

Viance LLC
3050 N. Galena Road
Sunbury, OH 43074

Rob Banister

BNSF Railway Company
1011 NE River Rd.
Topeka, KS 66616

Mike Barnes

MSU - Dept. of Sustainable Bioproducts
Box 9820
Mississippi State, MS 39762

Rachel Beck

Union Pacific Railroad
1400 Douglas St. STE 0910
Omaha, NE 68719

Randy Bowman

Norfolk Southern Corp.
1200 Peachtree St NE
Atlanta, GA 30309

Liam Burrell

GPI Capital
1345 Avenue of the Americas Floor 32
New York City, NY 10105

Erin Carson

CSX Transportation
4823 Yacht Club Rd
Jacksonville, FL 32210

Kevin Conn

Norfolk Southern Corp.
209 Shenandoah Ave. NE Suite 77
Roanoke, VA 24016

Brad Crawford

Norfolk Southern Corp.
1672 Donelwal Dr.
Lexington, KY 40511

Fern da Silva

FERNWOOD FPS Inc.
4434 Jolicoeur
Pierrefonds, PQ H9H 2B3

Olivia Daily

Kansas City Southern
427 W 12th Street
Kansas City, MO 64105

Brian Delbrueck

Viance LLC
4501 Somerset Drive SE
Bellevue, WA 98006

Lindsey DiGangi

PA Lumbermens Mutual Insurance Co.
2005 Market Street Suite 1200
Philadelphia, PA 19103

Zach Dombrow

BNSF Railway Company
1011 NE River Road
Topeka, KS 66616

Tod Echler

CSX Transportation
520 Saddlestone Drive
Saint Johns, FL 32259

Bruce Emberly

Canadian National
935 de la Gauchetière St. W. Fl. 12, 108, Supply Mngt.
Montreal, QC H3B 2M9

Larry Fenwick

CSX Transportation
500 Water Street 11th Floor J-350
Jacksonville, FL 32202

Michael Franke

Amtrak, Retired
3526 Pottawattomie Trl
Michigan City, IN 46360

Erik Froberg

BNSF Railway Company
2600 Lou Menk Drive OOB 3rd Floor
Ft Worth, TX 76131

Sheila Gudenrath

Union Pacific Railroad
1400 Douglas Street Stop 0780
Omaha, NE 68179

Don Guillen

Association of American Railroads
55500 DOT Rd.
Pueblo, CO 81001

Nate Irby

Union Pacific Railroad
4359 Hwy. 278 W
Hope, AR 71801

Mark Mankowski

US Forest Products Laboratory
Forest Service 201 Lincoln Green
Starkville, MS 39759

Mike McHenry

Transportation Technology Center, Inc.
55500 DOT Rd
Pueblo, CO 81005

Mark Miller

Mississippi Export Railroad Company
4519 McInnis Avenue
Moss Point, MS 39563

Dennis Mirabal

BNSF Railway Company
2600 Lou Menk Dr OOB-03
Fort Worth, TX 76131

Chris Moale

CSX Transportation
500 Water St. - J350
Jacksonville, FL 32202

Jeffrey Morrell

Oregon State University
41 Boggo Road
Dutton Park, Australia 4102

Wade Ostrander

Canadian Pacific Railway
7550 Ogden Dale Rd SE, Bldg #1
Calgary, AB T2C 4X9

Hamir Patel

CIBC
400 Burrard Street, 12th Floor
Vancouver, BC V6C 3A6

Linda Pollard

Rio Grande Pacific Corp.
6100 Southwest Blvd Ste 320
Fort Worth, TX 76109

Maya Ramadan

Canadian National
935 de La Gauchetière Street West
Montreal, QC H3B 2M9

James Roberts

Bluegrass Scenic Rail and Museum
175 Beasley Road
Versaille, KY 40383

Michael Sanders

MSU - Dept. of Sustainable Bioproducts
PO Box 9820
Mississippi State, MS 39762

Michael Skeen

CSX Transportation
156 Bouganvilla Dr
Ponte Vedra Beach, FL 32082

Michael Smith

Finger Lakes Railway Corp.
PO Box 1099
Geneva, NY 14456

Stephen Smith

Stephen Smith Consulting
2008 5th Avenue
Helena, MT 59601

John Smith

PA Lumbermens Mutual Insurance Co.
2005 Market Street Suite 1200
Philadelphia, PA 19103

Patrick Smotek

BNSF Railway Company
PO Box 46
Lyons, TX 77863

Sheetal Spiegel

Norfolk Southern Corp.
3 Commercial Place Box 244
Norfolk, VA 23510

Kristine Storm

Genesee & Wyoming
13901 Sutton Park Drive South Bldg. A Ste. 330
Jacksonville, FL 32224

Cory Thomas

BNSF Railway Company
2301 Lou Menk Drive GOB1W
Ft Worth, TX 76131

Steve Thompson

BNSF Railway Company
2600 Lou Menk Dr Operations Off. Bldg. 3rd Fl.
Fort Worth, TX 76131

Michael Tupholme

TD Securities Inc.
66 Wellington Street West, 7th Floor
Toronto, ON M5K 1A2

Jorge Velez

Kansas City Southern
427 w 12th St
Kansas City, MO 64105

Anthony Weiss

BNSF Railway Company
1291 Route 41 South
Galesburg, IL 61401

Forestal Sierra Madre, S.A. de C.V. (FSM)

Ave. Industrias #700

Parque Industrial Escobedo

Escobedo, Nuevo Leon (Monterrey) 66062 MEXICO

TEL: +52 (81) 8151-0000

EMAIL: ret@forestalsierramadre.com; rsalcido@forestalsierramadre.com

Plant or Other Locations:

Forestal Sierra Madre, S.A. de C.V. – Durango, Mexico

Forestal Sierra Madre, S.A. de C.V. – Monterrey, Mexico

Website: www.forestalsierramadre.com/

Physical Location: Same as mailing address

Contact: Rodrigo Elizondo Trevino, CEO

Roberto Salcido, Technical Director

Honorary Members

Railway Tie Association Membership Directory 2020-2021

Mike Aarstad

BNSF Railway Company, Retired
409 Crescent Lakes Drive
Andover, KS 67002

Marshall Allen

Allen Railroad Services, Retired
2600 Inverrary Dr.
Ennis, TX 75119

Gary Ambrose

Koppers Inc., Retired
309 Pine Valley Drive
Bridgeville, PA 15017

Terry Amburgey

Wood Protection Specialists, Retired
612 Smith Road
Sturgis, MS 39769

Archie Arthur

Archie Arthur
2228 Marcia Dr
Orange Park, FL 32073

Plywood Association

American Plywood Association
7011 S 19th St
Tacoma, WA 98466

Randy Baileys

Lonza Wood Protection, Retired
180 Perry Creek
Fayetteville, GA 30215

Chuck Baker

ASLRRRA
50 F Street NW Suite 500
Washington, DC 20001

Joe Balich

Amsted RPS- Retired
252 Magnolia Dr.
Nebo, NC 28761

Kirk Bastyr

Progressive Railroadings
2100 W. Florist Avenue
Milwaukee, WI 53209

Ronald Batory

Federal Railroad Administration
7 Sobre Los Cerros
Santa Fe, NM 87506

Mark Bear

National Hardwood Lumber Association
1767 CR27
Berry, AL 35546

Guy Beaudoin

Canadian National Railways, Retired
1640 Turgeon
Brossard, QC J4W 3H5

Larry Belfiore

Union Pacific Railroad, Retired
10249 Cimmaron Woods Drive
La Vista, NE 68128

Evan Bell

CSX Transportation
500 Water St. J350
Jacksonville, FL 32202

Butch Bernhardt

Western Wood Preservers Institute
2503 SE Mill Plain Blvd #205
Vancouver, WA 98684

James Beyerl

CSX Transportation, Retired
205 Hollywood Forest Drive
Fleming Island, FL 32203

Phil Bird

Timber-Tie Technology, Inc.
256 Markham Place
Beaconsfield, QC H9W 2B6

David Bischel

California Forestry Association
1215 K St Ste 1830
Sacramento, CA 95814

Shelley Bishop

National Forest Service Library
One Gifford Pinchot Drive
Madison, WI 53726

Cal Bole

Eagle Metal Products, Retired
23725 S. Glenburn Dr.
Sun Lakes, AZ 85248

John Bosshart

BNSF, Retired
7615 Cooper Point Road NW
Olympia, WA 98502

Frank Brady

Pandrol USA, Retired
PO Box 367
Bridgeport, NJ 8014

Max Braswell

Arkansas Forestry Association
1213 W 4th St.
Little Rock, AR 72201

Brad Brenneman

Norfolk Southern Corp.
152 Grace Road Apt 52
Altoona, PA 16602

Harry Bressler

Stella-Jones Corporation, Retired
242 Pond Lane
DuBois, PA 15801

Nicole Brewin

Railway Supply Institute
425 Third Street, S.W. Suite 920
Washington, DC 20024

Dallin Brooks

Western Wood Preservers Institute
12503 SE Mill Plain Blvd. Suite 205
Vancouver, WA 98684

Brian Brookshire

Missouri Forest Products Association
505 East State Street
Jefferson City, MO 65101

Jessica Cajas

Railway Track & Structures
20 South Clark Street Suite 2450
Chicago, IL 60603

David Caldwell

Hardwood Market Report
780 Ridge Lake Blvd. Suite 102
Memphis, TN 38120

Camille Campbell

ASLRRRA
50 F Street NW Suite 500
Washington, DC 20001

James Carr

Lumbermen's Equipment Digest
2508 Pillow Dr.
Columbia, TN 38401

Jim Carter

Norfolk Southern, Retired
751 Providence Club Drive
Monroe, GA 30656

Beth Caruso

AREMA
4501 Forbes Blvd. Suite 130
Lanham, MD 20706

Louis Cerny

AREMA, Retired
310 Summit Hall Rd
Gaithersburg, MD 20877

Jonathan Chalon

Simmons-Boardman Publishing Corp.
55 Broad Street, 26th Floor
New York, NY 10004

Poo Chow

UI at Urbana-Champaign, Ret.
W-503 Turner Hall, 1102 S. Goodwin Ave.
Urbana, IL 61801

Brian Clark

Horry-Georgetown Technical College
Forest Tech Dept. 4003 South Fraser St.
Georgetown, SC 29440

Sam Cockrel

Sam Cockrel
39 Hospital Drive
Metropolis, IL 62960

Dana Cole

Hardwood Federation
1101 K Street NW, Suite 700
Washington, DC 20005

David Connell

Union Pacific
4012 Maltese Ct.
Punta Gorda, FL 33950

Terry Conners

UK- Dept. of Forestry, Retired
205 Thomas P Cooper
Lexington, KY 40546

H.T. Crouch

H.T. Crouch
1118 Melrose Ave
Florence, SC 29505

Bob Cunningham

Canada Crossties, Retired
837 McCurdy Road East
Kelowna, BC V1X 8G3

Richard Currier

New Hampshire Central Railroad, Ret.
33 Misty Oak Drive
Concord, NH 03301

David Davis

Transportation Technology Center, Inc.
PO Box 11130
Pueblo, CO 81001

Doug Delmonico

Encore Rail Systems, Inc., Retired
2350 West Midway Boulevard
Broomfield, CO 80020

Bob DeMarco

Railway Track & Structures- Retired
20 South Clark Street Suite 2450
Chicago, IL 60603

Marcus Dersch

University of Illinois
205 N. Matthews Ave.
Urbana, IL 61801

Candace Dinwiddie

Tennessee Forestry Association
2605 Elm Hill Pike Suite G
Nashville, TN 37214

Norman Doerr

Norman Doerr
25440 S Flame Tree Dr
Sun Lakes, AZ 85248

Craig Domski

Union Pacific Railroad, Retired
16247 California Street
Omaha, NE 68118

Conrad Dugan

Koppers Inc., Retired
219 Sonoma Valley Drive
Cary, NC 27518

K.C. Edscorn

K.C. Edscorn
420 S. Kirkwood Rd. Apt. 402
Kirkwood, MO 63122

Riley Edwards

University of Illinois
205 N. Matthews Ave.
Urbana, IL 61801

Emma Ehrenhart

UI 1239B Newmark Engineering Lab, MC-250
205 N. Matthews Ave.
Urbana, IL 61801

Jerry Farley

JH Baxter, Retired
4459 SE Sweetbriar Ln
Troutdale, OR 97060

Pat Foran

Progressive Railroading
2100 W Florist Ave
Milwaukee, WI 53209

Ohio Forestry Association

Ohio Forestry Association, Inc.
507 Main Street Suite 202
Zanesville, OH 43701

Mark Franck

Koppers Inc., Retired
6132 Saddleridge Cir
Roanoke, VA 24018

Anthony Frey

ArcelorMittal, Retired
424 SE 29th St
Cape Coral, FL 33904

Bob Fronczak

Association Of American Railroads
425 Third Street SW Suite 1000
Washington, DC 20024

Martin Fry

Oklahoma Forestry Association
511 N. 6th St.
Hugo, OK 74743

JoAnn Fuchs

University of Wisconsin-Madison
432 North Lake Street Room 725
Madison, WI 53706

William Gadd

Appalachian Timber Services, Retired
336 Sunset Drive
Bethel Park, PA 15102

Don Gallery

CN/IC, Retired
10452 East River South Road
Mokena, IL 60954

Jim Gauntt

Railway Tie Association, Retired
115 Commerce Dr Ste C
Fayetteville, GA 30214

Edward Gentsch

Edward Gentsch
4008 Via Pima
Palos Verdes Estates, CA 90274

Terry Gillis

Recovery 1, Inc.
1805 Stewart Street
Tacoma, WA 98421

Terry Good

Lashly & Baer
714 Locust St
Saint Louis, MO 63101

John Gray

Association Of American Railroads
425 Third Street SW Suite 1000
Washington, DC 20024

William Griffin

Dept. of Sustainable Bioproducts
College of Forest Resources Box 9680
MS State, MS 39762

William Grove

Coastal Region Companies
PO Box 1000
Union Bridge, MD 21791

John Gunter

Illinois Forestry Association
4055 Fawn Dr
Marion, IL 62959

Robert Hahn

Robert Hahn
2636 NW 118th St
Oklahoma City, OK 73120

Lewis Hamilton

Burke-Parsons-Bowlby, Retired
16 Buckskin Ln
Buena Vista, VA 24416

Paul Hartgen

National Association of Manufacturers
733 10th Street NW, Suite 700
Washington, DC 20001

Keith Hartwell

Chambers, Conlon & Hartwell
410 1st St. SE FL 2
Washington, DC 20003

Anthony Hatch

ABH Consulting
1230 Park Avenue Suite 4A
New York City, NY 10128

Byron Hawkins

Webster Industries, Retired
3947 Piedmont Lake Rd
Pine Mountain, GA 31822

Chuck Hegberg

reGENESIS Consulting Services
3408 Smoketown Rd.
Spring Grove, PA 17362

Jack Hellmann

Genesee & Wyoming Inc.
20 West Ave
Darien, CT 6820

Peggy Herman

Transportation Technology Center, Inc.
PO Box 11130
Pueblo, CO 81001

John Hester

National Hardwood Lumber Association
PO Box 34518
Nashville, TN 38184

Kevin Hicks

TranSystems
1299 Farnam St, Suite 350
Omaha, NE 68102

Shelly Hicks

National Hardwood Lumber Association
PO Box 34518
Memphis, TN 38134

Fritz Horn

CSX Transportation, Retired
2024 Marye Brant Loop North
Neptune Beach, FL 32266

Renee Hornsby

National Hardwood Lumber Association
PO Box 34518
Memphis, TN 38184

Jack Hughes

Norfolk Southern Corp., Retired
164 Bogey Lane
Salem, VA 24153

Gary Hunter

Union Pacific Railroad, Retired
4917 Lillian St.
Omaha, NE 68157

Chris Isaacson

Alabama Forestry Association
555 Alabama Street
Montgomery, AL 36104

Ian Jefferies

Association Of American Railroads
425 Third Street SW Suite 1000
Washington, DC 20024

Judd Johnson

Hardwood Market Report
780 Ridge Lake Blvd. Suite 102
Memphis, TN 38120

Andy Johnson

Hardwood Market Report
780 Ridge Lake Blvd. Suite 102
Memphis, TN 38120

Clif Jones

Osmose, Inc., Retired
P.O. Box 20011
St. Simons Island, GA 31522

Linda Jovanovich

Hardwood Manufacturers Association
665 Rodi Road Suite 305
Pittsburgh, PA 15235

Conner Killian

2019 Scholarship Recipient- Louisiana Tech
816 Harang Ave.
Metairie, LA 70001

Kenneth Kirby

Kenneth Kirby
1205 Schuman Ln
Petaluma, CA 94952

Merle Klink

Koppers Inc., Retired
1185 Airedale Drive
Bethel Park, PA 15102

Matthew Konkler

OSU Wood Science & Engineering
238 Richardson Hall
Corvallis, OR 97331

Richard Krause

Norfolk Southern Corp., Retired
13432 Thoroughbred Drive
Dade City, FL 33525

John Kress

Koppers Inc., Retired
13767 Yelma Street
Venice, FL 34293

Dorothy Kuhlman

Dorothy Kuhlman
431 Picasso Drive
Nokomis, FL 34275

Curtis Kyger

Union Pacific Railroad, Retired
815 Oak Street
Hood River, OR 97031

W.D. Labaugh

W.D. Labaugh
35 Woodbury St
Yarmouth, ME 4096

Lee Laechelt

Alabama Forest Owners' Association
P.O. Box 361434
Birmingham, AL 35236

University Library

Northwestern University Library
1970 Campus Drive Level 5, North Tower
Evanston, IL 60208

Honorary Members

Railway Tie Association Membership Directory 2020-2021

Natural Resources Library

University Of Minnesota
375 Hodson Hall
Saint Paul, MN 55108

Kerry Livengood

TN Division of Forestry
440 Hogan Road
Nashville, TN 37220

Tom Loadman

Koppers Inc., Retired
211 Sussex Way
McMurray, PA 15317

Clyde Lobb

BNSF Railway Company, Retired
325 Oak Tree Point Lane
Shell Knob, MO 65747

Nathan Loftice

BNSF Railway
2500 Lou Menk Drive AOB-3
Fort Worth, TX 76131

Paul Lyskava

Pennsylvania Forest Products Assoc.
301 Chestnut Street Suite 102
Harrisburg, PA 17101

John Mabry

John L. Mabry
9714 Ensley Lane
Shawnee Mission, KS 66206

Gene Mall

GDM Landresources Inc.
834 County Road 314
Chamais, MO 65024

H.C. Martin

Hartwell Martin
3823 Franklin RD SW #109
Roanoke, VA 24014

Gordon Martyn

Valley Metro Rail
101 N 1st Ave Ste 1300
Phoenix, AZ 85003

Jerry Marullo

Railway Age
55 Broad St. 26th Floor
New York, NY 10004

Charles McCormick III

Charles McCormick III
1535 SW Elizabeth St
Portland, OR 97201

Colin McCown

American Wood Protection Association
PO Box 361784
Birmingham, AL 35236

Jeff McCracken

Norfolk Southern Corp., Retired
150 Rolling Rd.
Social Circle, GA 30025

John McGinley

AmeriTies Holdings, Retired
2002 Spirit Wood Lane
Edmond, OK 73025

Steve McWilliams

Georgia Forestry Association
PO Box 1217
Forsyth, GA 31029

Dan Meyer

Hardwood Review
PO Box 471307
Charlotte, NC 28247

Roland Meyers

Roland Meyers.com
33 Ramona Ave
Oakland, CA 94611

Bob Michel

Kerr-McGee, Retired
609 Cattle Baron Road
Fairview, TX 75069

Jeff Miller

Treated Wood Council
1101 K Street NW Suite 700
Washington, DC 20005

Alan Miller

Stella-Jones Corp., Retired
9223 Maury River Rd
Goshen, VA 24439

Gayle Minkler

Union Pacific Railroad, Retired
406 Village Lane
Wake Village, TX 75501

Robert Modisette

BNSF Railway Company, Retired
209 Mayo Dr
Bullard, TX 75757

Ray Moistner

Indiana Hardwood Lumbermen's Assoc.
12574 Promise Creek Lane Ste.100
Fishers, IN 46038

Mandi Morrison

Covey Communications Corporation
P.O. Box 2267
Gulf Shores, AL 36547

Bill Moss

MiTek U.S.A., Retired
131 Wake Forest Place
O'Fallon, MO 63368

Adam Moyer

CSX Transportation
500 Water Street J430
Jacksonville, FL 32202

Texon Santa Fe Museum

Texon Santa Fe Depot Museum
5821 N. Moss Ave
Odessa, TX 79763

Phil Myers

Cahaba Pressure Treated Forest Products, Ret.
16100 NW Canterbury Way
Portland, OR 97229

Timothy Nash

Norfolk Southern Corp., Retired
5383 Glenvar Heights Blvd
Salem, VA 24153

Adam Nordstrom

Viking Navigation LLC
4201 Wilson Blvd. #110-164
Arlington, VA 22203

Clyde Norton

DuraWood Treating, Retired
13 W Augusta CT
Rogers, AR 72758

Jenifer Nunez

Railway Track & Structures
20 South Clark Street Suite 1910
Chicago, IL 60603

Talty O'Connor

Covey Communications Corporation
P.O. Box 2267
Gulf Shores, AL 36547

Phillip Ogden

Norfolk Southern Corp., Retired
790 Old Lathemtown Road
Canton, GA 30115

Ray Ohlis

Koppers Inc., Retired
400 Glen Lake Drive
Grenada, MS 38901

Preston Painter

Norfolk Southern Corp., Retired
170 Stonehaven Drive
Dawsonville, GA 30534

Brian Perkins

Land Resources Department
Glenville State College 200 High Street
Glenville, WV 26351

Rusty Pfeiffer

Koppers Inc., Retired
310 South Drive
Valencia, PA 16059

Lisa Pleasants

CSX, Retired
12071 River Plantation Dr.
Jacksonville, FL 32223

Dan Pollock

BNSF Railway Company, Retired
22253 B Rd
Havensville, KS 66432

Dick Pouzar

Illinois Forestry Association
4055 Fawn Dr
Marion, IL 62959

Dr. James Price

University of Missouri, Field Station
PO Box 6
Naylor, MO 63953

Kevin Ragon

Southern Pressure Treaters' Association
PO Box 1784
Starkville, MS 39760

Tedrick Ratcliff

Mississippi Forestry Association
6311 Ridgewood Road Suite W405
Jackson, MS 39202

Carol Sue Ray

Railway Tie Association, Retired
162 Academy Drive
Wilmore, KY 40390

Michael Reid

Oxford Economics
5 Hanover Square, 8th Floor
New York, NY 10004

Richard Reiff

TTCI, Retired
4364 Blueflax Dr.
Pueblo, CO 81001

Jim Ringe

UK - Dept. of Forestry
202 Thomas P Cooper
Lexington, KY 40546

Gerald Roskovensky

Koppers Inc. Retired
186 Hoffman Boulevard
West Milton, PA 17886

Stephen Rountree

Stephen Rountree
730 Plum Lane
Clarksville, GA 30523

Bill Rousis

Norfolk Southern Corp., Retired
331 Spindle Ct.
Canonsburg, PA 15317

Christy Sammon

GoRail
425 3rd St. SW Suite 940
Washington, DC 20024

James Sanders

Kerr-McGee Chemical, Retired
434 Redwood Dr
Farmington, MO 63640

Travis Schmitt

2019 Scholarship Recipient UWM
302 South Park St. Apt A
Madison, WI 53715

Janet Seaman

Janet Seaman
PO Box 279
Wilton, AL 35187

Richard Shelton

Richard Shelton
7446 Spring Village Dr Apt 318
Springfield, VA 22150

Thomas Simpson

Railway Supply Institute
425 Third Street, SW Suite 920
Washington, DC 20024

Nicholas Skoulis

Creosote Council
300 Tryon Street PO Box 423
South Glastonbury, CT 6073

Robert Snyder

OmniTRAX
161 Crystal Valley Road
Manitou Springs, CO 80829

George Sokulski

Railway Track & Structures
20 South Clark Street Suite 1910
Chicago, IL 60603

Edward Sparks

CSX Transportation
500 Water Street - J350
Jacksonville, FL 32202

Dana Spessert

National Hardwood Lumber Association
PO Box 34518
Memphis, TN 38184

Periodical Subscription

Paul Smith's College Of American Railroads
Route 86 & 30 P.O. Box 265
Paul Smiths, NY 12970

Ashley Tandy

Indiana Hardwood Lumberman's Assoc.
12574 Promise Creek Lane Suite 100
Fishers, IN 46038

Martin Tauvette

Wood Preservation Canada
202-2141 Thurston Drive
Ottawa, ON K1G 6C9

Adam Taylor

University of Tennessee
2506 Jacob Drive
Knoxville, TN 37996

Andy Thompson

Red River Valley & Western Rail, Ret.
PO Box 1080
Lakebay, WA 98349

Gene Tonsager

Recovery 1, Inc.
1630 East 18th Street
Tacoma, WA 98421

Carmen Trevizo

Transportation Technology Center, Inc.
PO Box 11130 55500 Dot Road
Pueblo, CO 81001

Fred Vander Haag

Pandrol USA, LP, Retired
200 S Jackson Rd
Ludington, MI 49431

Buck Vandersteen

Louisiana Forestry Association
PO Box 5067
Alexandria, LA 71307

Richard Vlosky

Louisiana Forest Products Development Centr.
Louisiana State Univ. Agricultural Centr.
Baton Rouge, LA 70803

Scott Waring

Koppers/M.A. Energy Resources Div, Ret.
1143 E. Frye Road
Phoenix, AZ 85048

Mike Washko

Virginia Forest Products Association
PO Box 160
Sandston, VA 23150

Paul Webster

Webster Industries, Retired
PO Box 292
Wayzata, MN 55391

Sam Westbrook

Clear Creek Tie Co. Inc.
PO Box 239
Nashville, AR 71852

Jeremy Whatmough

Jeremy Whatmough
8131 Fieldside Drive
Lakewood Ranch, FL 34240

Ashley Wieland

NRC
80 M St SE
Washington, DC 20003

Gary Williams

Koppers Inc., Retired
24 Anthony Lane
Troutville, VA 24175

Alex Williams

Stella-Jones, Retired
1945 Eastline Rd.
Bells, TX 75414

Bill Wimmer

Union Pacific Railroad, Retired
2420 Ponca Pt
Plattsmouth, NE 68048

Allan Zarembski

University of Delaware
Dept. of Civil Engineering 301 DuPont Hall
Newark, DE 19716

John Zuspan

Track Guy Consultants
934 Royal Ct
Canonsburg, PA 15317

University of Chicago

UC-John Crerar Library
5730 South Ellis Ave.
Chicago, IL 60637

Index Of Members

Railway Tie Association Membership Directory 2020-2021

<i>Organization Name</i>	<i>Member Type</i>	<i>Page No.</i>
A&K Railroad Materials, Inc.	NP Supplier.....	33
Acme Wood Preserving Inc.....	Producer Direct.....	9
American Wood Technology	NP Supplier.....	33
AmeriTies Holdings LLC	Producer Direct.....	9
Ameritrack Rail	RTA Contractor	41
Anthony Timberlands Inc.	Producer Direct.....	9
Appalachian Timber Services, LLC.....	Producer Direct.....	10
Applied Testing.....	RTA Contractor	41
Arkansas Steel Associates.....	NP Supplier.....	33
Asphalt and Fuel Supply, LLC	NP Supplier.....	33
Atlantic Track & Turnout	RTA Contractor	41
Beal Lumber Co., Inc.....	Producer Direct.....	11
Blackwood Solutions	RTA Contractor	51
BPM Lumber, LLC	Producer Direct.....	11
Brewco Inc.	NP Supplier.....	34
BSP Manufacturing	NP Supplier.....	34
Buchanan Hardwoods	Producer Direct.....	11
Cahaba Pressure Treated Forest Products	Producer Direct.....	11
Charles City Forest Products.....	Producer Direct.....	12
CHZ Technologies	RTA Contractor	51
Coopers Creek Chemical Corp.....	Preservative Supplier	27
Danella Rail	RTA Contractor	41
DECCO	Producer Direct.....	12
Eagle Forest Products	Producer Direct.....	12
Eagle Metal Products.....	NP Supplier.....	34
East Coast Railroad Services, LLC	RTA Contractor	51
Edwards Wood Products	Producer Direct.....	12
EHS Support, LLC	RTA Contractor	42
Embry Automation & Controls	NP Supplier.....	34
Encore Rail Systems, Inc.	NP Supplier.....	35
Etimine USA, Inc.	Preservative Supplier	27
Forestal Sierra Madre	Global Associate.....	60
Gemini Forest Products.....	Producer Direct.....	13
Genics Inc. LLC	NP Supplier.....	35
Georgetown Rail Equipment Company	RTA Contractor	42
Gross & Janes Co.....	Producer Direct.....	13
Harsco Rail	RTA Contractor	42
Herzog	RTA Contractor	43
Industrial Power.....	NP Supplier.....	35
Innovative Solutions Inc.	RTA Contractor	51

Index Of Members

Railway Tie Association Membership Directory 2020-2021

<i>Organization Name</i>	<i>Member Type</i>	<i>Page No.</i>
Intermountain Orient, Inc.....	Producer Direct.....	13
JH Baxter	Producer Direct.....	14
John L. Frye Co., Inc.	Producer Direct.....	14
K. L. Barton & Sons Tie Co., Inc.....	Producer Direct.....	14
K.U. Resources, Inc.....	RTA Contractor	43
Keystone Environmental	RTA Contractor	43
Kop-Coat Inc.	NP Supplier.....	35
Koppers Inc.	Producer Direct.....	14
Koppers Inc.	Preservative Supplier	27
Koppers Recovery Resources.....	RTA Contractor	52
L.B. Foster Company.....	NP Supplier.....	35
Lee Inspection & Consulting.....	RTA Contractor	44
Lewis Bolt & Nut Co.....	NP Supplier.....	36
Lone Star Specialties, LLC	Preservative Supplier	27
Lonza Wood Protection, Inc.....	Preservative Supplier	28
McCord Tie & Timber, Inc.	Producer Direct.....	16
McCreary County Hardwoods, Inc.....	Producer Direct.....	16
Mellott Wood Preserving Co.....	Producer Direct.....	16
Michels Materials.....	RTA Contractor	44
Midwest Missouri Contractors	RTA Contractor	52
Missouri Tie, LLC.....	Producer Direct.....	16
MiTek Industries, Inc.	NP Supplier.....	36
Mountain States Contracting.....	RTA Contractor	44
National Salvage & Service Corp.	RTA Contractor	52
Natural Steam Energy	Timberland Owner	44
Natural Wood Solutions, LLC	Producer Direct.....	16
Netterville Lumber Company	Producer Direct.....	17
Nevada Railroad Materials	RTA Contractor	52
Nisus Corporation.....	Preservative Supplier	28
Norman Lumber Company.....	Producer Direct.....	17
North American Tie & Timber LLC.....	Producer Direct.....	17
Omaha Track.....	RTA Contractor	44
Omega Industries	NP Supplier.....	36
P.T. O'Malley Lumber Co. Inc.....	Producer Direct.....	18
Pandrol USA, LP.....	NP Supplier.....	36
Perma Treat Corporation.....	Producer Direct.....	18
Ponderosa Nursery.....	RTA Contractor	53
Precision Mechanical Engineering	RTA Contractor	45
Progress Rail Services.....	NP Supplier.....	37
RailPros.....	RTA Contractor	45
Railroad Construction Co. of South Jersey	RTA Contractor	45

Index Of Members

Railway Tie Association Membership Directory 2020-2021

<i>Organization Name</i>	<i>Member Type</i>	<i>Page No</i>
Railroad Construction Company	RTA Contractor	45
RailWorks Corporation.....	RTA Contractor	46
Rain Carbon Canada.....	Preservative Supplier	28
REMSA	NP Supplier.....	37
RESIDCO	RTA Contractor	46
Rio Tinto / U.S. Borax.....	Preservative Supplier	28
Scott Post & Tie Company, Inc.....	Producer Direct.....	18
Shelby Railroad Service.....	RTA Contractor	46
Southern Forest Industries Inc.	Producer Direct.....	19
Spokane Forest Products.....	Producer Direct.....	19
Stella-Jones Corporation.....	Producer Direct.....	19
Stella-Jones Inc. CANADA	Producer Direct.....	21
Sumitomo Canada Limited	Producer Direct.....	23
Superior Tie & Timber	Producer Direct.....	23
Tank Fab Inc.....	NP Supplier.....	37
Taylor Machine Works, Inc.....	NP Supplier.....	38
Tex Par Energy	NP Supplier.....	38
The Lattimore Company	RTA Contractor	53
The Somerville Companies, Inc.	Producer Direct.....	18
Tie & Timber Technologies	Producer Direct.....	23
TiEnergy	RTA Contractor	53
Timber Products Inspection.....	RTA Contractor	46
T-Rail Products.....	NP Supplier.....	38
Trans Canada Wood Products Ltd.....	RTA Contractor	46
Trans-Global Solutions	RTA Contractor	47
Ward Timber, Ltd	Producer Direct.....	23
Webb Consultants	RTA Contractor	47
Westlake Timber Supply, LLC	Producer Direct.....	24
Wheeler Lumber, LLC	Producer Direct.....	24
Willamette Valley Company.....	NP Supplier.....	38
William G. Moore & Son, Inc. of Delaware.....	Producer Direct.....	24
Wood Care Systems	Preservative Supplier	29
Xcel Energy.....	RTA Contractor	54
Zwicky Processing & Recycling, Inc	RTA Contractor	54

This Page Intentionally Left Blank

INSIDE BACK COVER



Railway Tie Association
115 Commerce Drive, Suite C
Fayetteville, Georgia 30214
770.460.5553